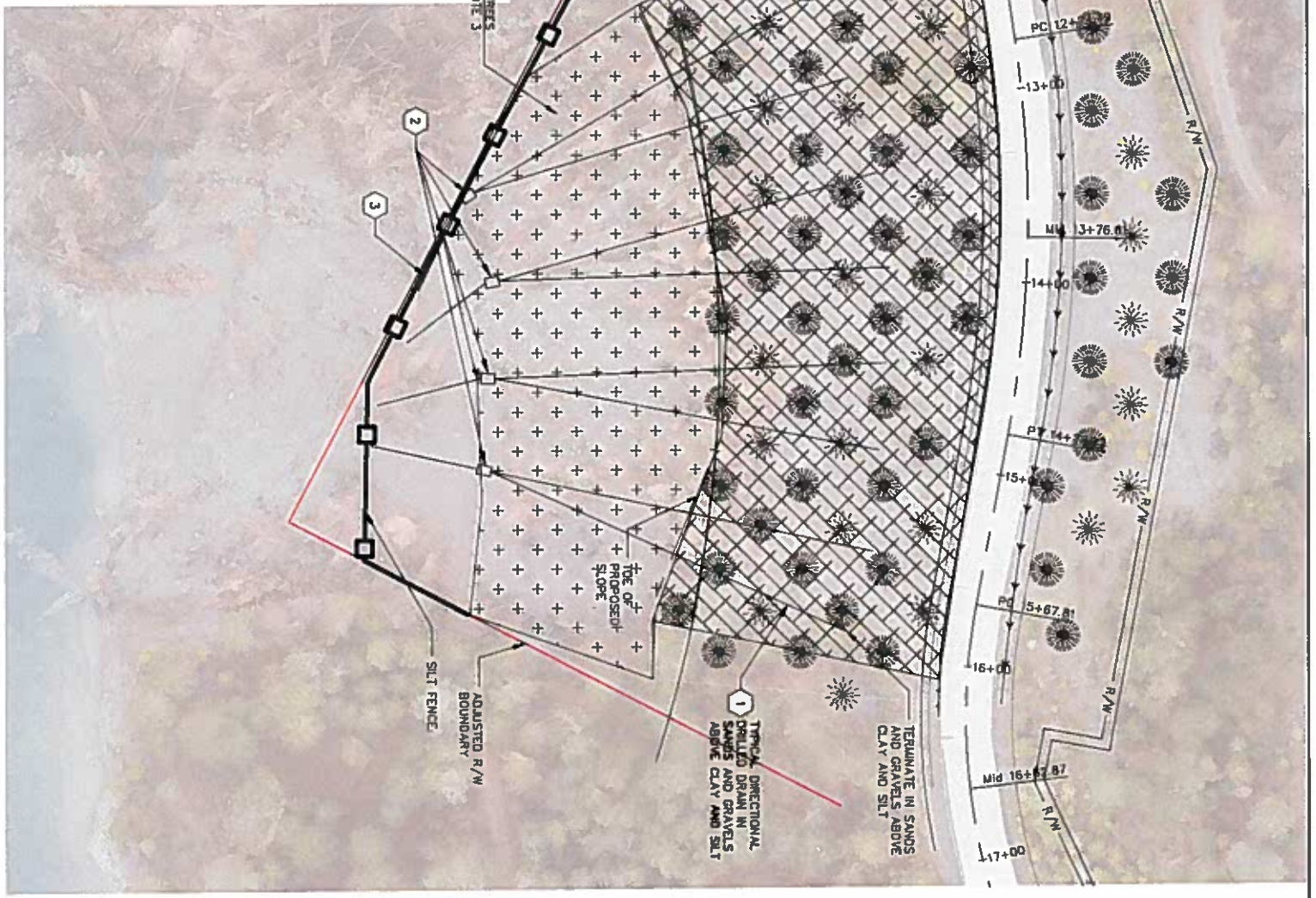


1 CATCH BASIN SLOPE DRAIN DETAIL



2 PORCUPINE BAY EROSION CONTROL PLAN

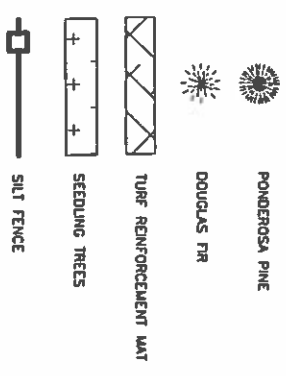
**GENERAL NOTES**

1. EXTRA ANCHORS ARE REQUIRED FOR TURF REINFORCEMENT MAT IN AREAS WHERE MAT IS CUT FOR TREE INSTALLATION.
2. TREES CONSIST OF 70% PONDEROSA PINE AND 30% DOUGLAS FIR. PLANT TREES WITH 30 FT CENTER TO CENTER SPACING.
3. SEEDLING TREES CONSIST OF 70% PONDEROSA PINE AND 30% DOUGLAS FIR. PLANT SEEDLING TREES WITH 10 FT CENTER TO CENTER SPACING.
4. PLACE TURF REINFORCEMENT MAT (TRM) INTO AN EXCAVATED TRENCH MEASURING AT LEAST 6" DEEP AND WIDE PIN THE MAT AT 1' INTERVALS ALONG THE BOTTOM OF THE TRENCH, BACKFILL AND COMPACT.
5. UNROLL THE MAT DOWN THE SLOPE, MAINTAINING INTIMATE CONTACT BETWEEN THE SOIL AND THE SMOOTH SIDE OF THE MAT OVERLAP ADJACENT ROLLS A MINIMUM OF 6" PIN THE MAT TO THE GROUND USING STAPLES OR PINS IN A 3' PATTERN. LONGITUDINAL OVERLAPS MUST BE A MINIMUM OF 6" AND UNIFORM ALONG THE ENTIRE LENGTH OF THE OVERLAP AND STAPLED OR PINNED EVERY 3' ALONG THE OVERLAP. ROLLS ENDS MAY BE SPLICED BY OVERLAPPING 1' IN THE DIRECTION OF WATER FLOW, WITH THE UPSTREAM MAT PLACED ON TOP OF THE DOWNSTREAM MAT. THIS OVERLAP SHOULD BE SECURED BY STAPLES OR PINS AT 1' SPACING ACROSS THE MAT OVERLAPS.
6. SECURING DEVICES SHALL BE 11 GAUGE, 6" X 1" X 6" METAL STAPLES OR 18" PINS, HAVING A SHANK DIAMETER AND AN ATTACHED 1" WASHER. DRIVE STAPLES OR PINS SO THAT THE TOP OF THE STAPLE OR WASHER IS FLUSH WITH GROUND SURFACE. STAPLE OR PIN EACH MAT AS OUTLINED IN NOTE 5.
7. FOR QUANTITIES SUMMARY SEE SHEET 7.
8. SEE HORIZONTAL DRAINS SPECIAL PROVISION TABLE (7-01) FOR DIRECTIONALLY DRILLED DRAINS DATA TABLE.

**KEY NOTES:**

1. DRAIN PIPE 2 IN. DIA., SCHEDULE 80 PVC WITH #10 SLOTS
2. CATCH BASIN TYPE 1
3. UNDERDRAIN PIPE 6 IN. DIA.

**LEGEND:**



**EROSION CONTROL PLAN**

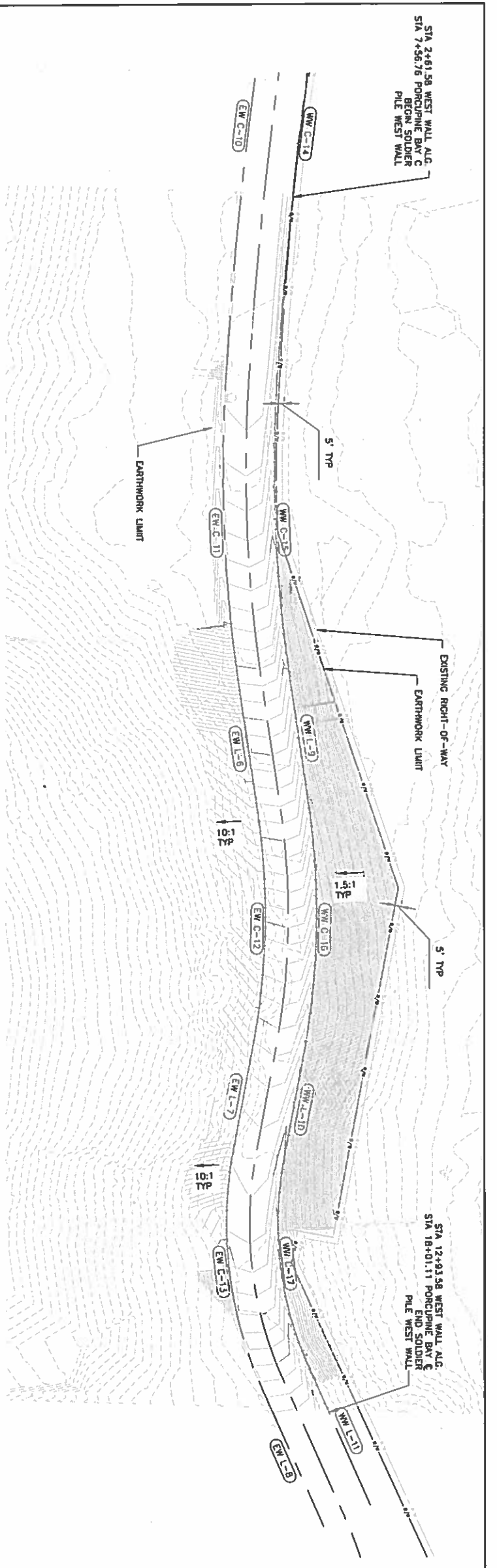
ISSUE	DATE	DESCRIPTION	PROJECT NUMBER	HOR. PROJ.	VERT. PROJ.
1	03-02-2018	BID DOCUMENTS			
PROJECT MANAGER: MRF					



LINCOLN COUNTY  
PORCUPINE BAY ROAD LANDSLIDE  
FEDERAL AID PROJECT NO.: ER-1701(016)



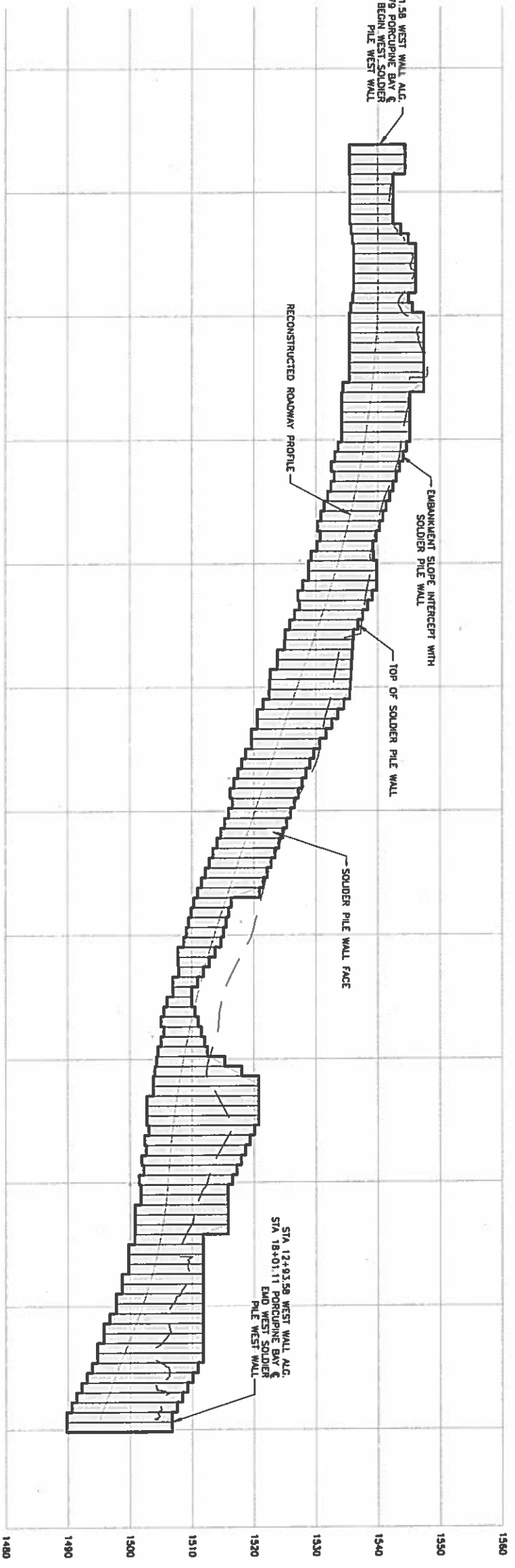
STA 2+61.58 WEST WALL A.L.G.  
 STA 7+56.76 PORCUPINE BAY C  
 BEGIN SOLDIER  
 PILE WEST WALL



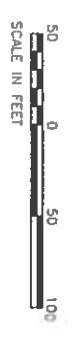
1 PORCUPINE BAY SOLDIER PILE WALL PLAN - WEST WALL

NOTE:  
 1. SEE SHEET 2 FOR WALL ALIGNMENT  
 2. DATA, SLOPE GRADING AS SHOWN BEHIND WALL FOR FINISHED GRADE IS BASIS FOR TOP OF PILE SHAFT

STA 2+61.58 WEST WALL A.L.G.  
 STA 7+56.76 PORCUPINE BAY C  
 BEGIN WEST SOLDIER  
 PILE WEST WALL



2 PORCUPINE BAY SOLDIER PILE WALL PROFILE - WEST WALL



WEST WALL PLAN AND PROFILE



**B** Budinger  
 & Associates  
**HDR**

ISSUE	DATE	DESCRIPTION	PROJECT NUMBER	HDR PROJ #
2	03-26-2018	ADDENDUM #1		
1	03-02-2018	BID DOCUMENTS		



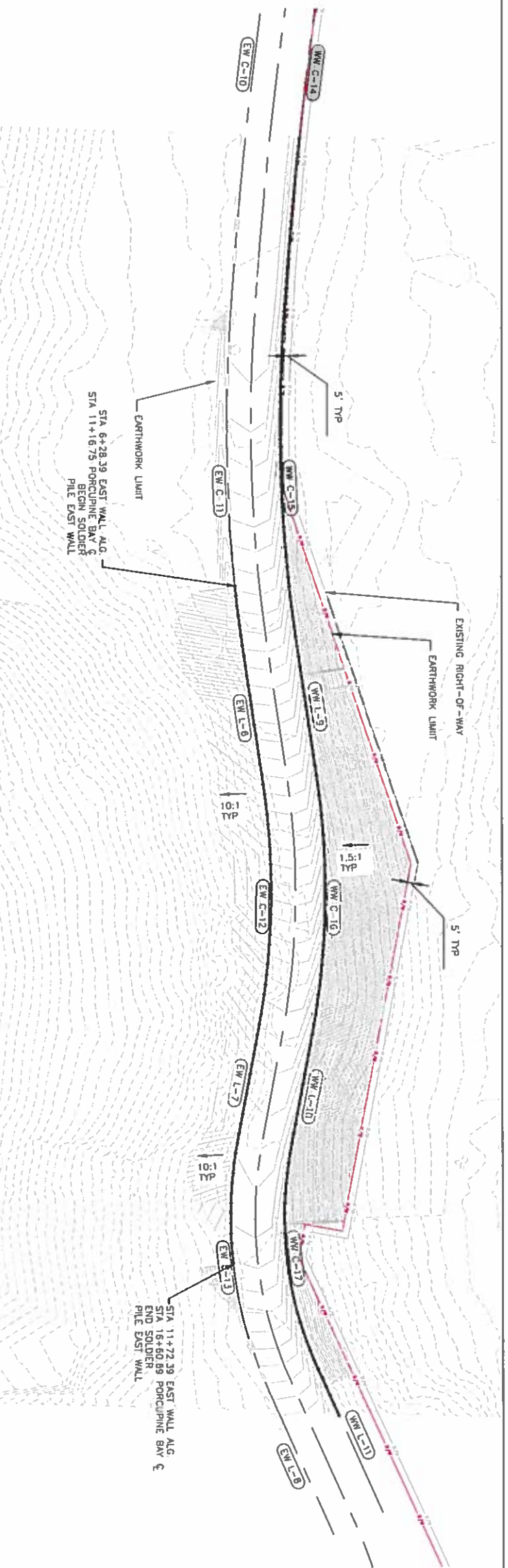
LINCOLN COUNTY  
 PORCUPINE BAY ROAD LANDSLIDE  
 FEDERAL AID PROJECT NO.: ER-1701(016)



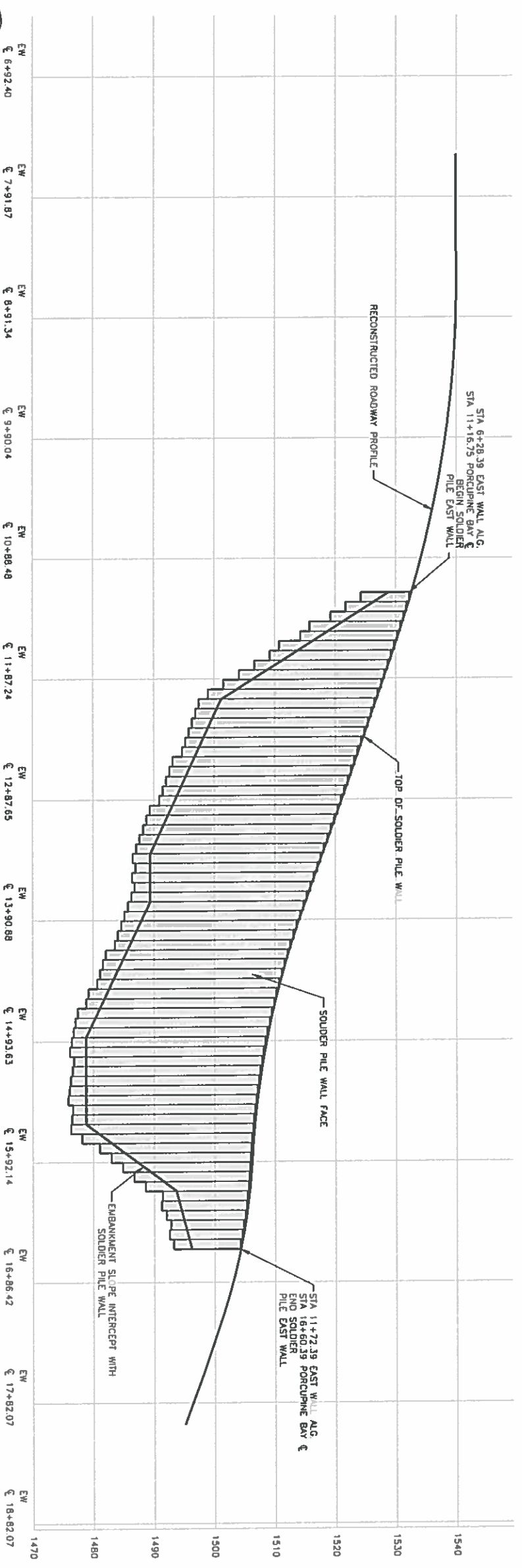
FILENAME: PLAN & PROFILE\_002  
 SCALE: 1" = 50'

SHEET  
 12

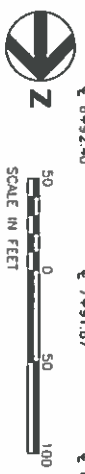
NOTE:  
1. SEE SHEET 2 FOR WALL ALIGNMENT DATA



13 PORCUPINE BAY SOLDIER PILE WALL PLAN - EAST WALL



13 PORCUPINE BAY SOLDIER PILE WALL PROFILE - EAST WALL



EAST WALL PLAN AND PROFILE



ISSUE	DATE	DESCRIPTION	PROJECT NUMBER	HDR PROJ. #
1	03/02/2018	BID DOCUMENTS		#10072486



LINCOLN COUNTY  
PORCUPINE BAY ROAD LANDSLIDE  
FEDERAL AID PROJECT NO.: ER-1701(016)



FILENAME: PLAN & PROFILE.003  
SCALE: 1" = 50'