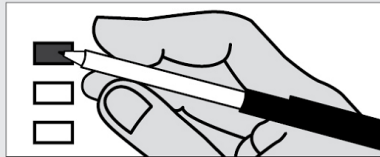


Instructions

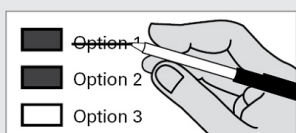
How to vote



Use a dark blue or black ink pen to completely fill in the box to the left of your choice.

Vote for one candidate on the ballot. If you vote for more than one, no votes will be counted.

If you make a mistake



Draw a line through the candidate's name.

Then you may make another choice.

Optional write-in



To vote for a candidate not listed for that race, fill in the box to the left of "write-in" and print the name on the line.

**Who donates to campaigns?**  
View contributors for candidates and measures  
Public Disclosure Commission  
www.pdc.wa.gov  
Toll Free (877) 601-2828

Start Voting Next Column -->

State Measures

Referendum Measure

Referendum Measure No. 90

The legislature passed Engrossed Substitute Senate Bill 5395 concerning comprehensive sexual health education. This bill would require school districts to adopt or develop, consistent with state standards, comprehensive age-appropriate sexual health education, as defined, for all students, and excuse students if their parents request.

Should this bill be:

Approved

Rejected

Advisory Votes

Advisory Vote No. 32  
Engrossed Substitute Senate Bill 5323

The legislature imposed, without a vote of the people, a retail sales tax on pass-through charges retail establishments collect for specified carryout bags, costing \$32,000,000 in its first ten years, for government spending.

This tax increase should be:

Repealed

Maintained

Advisory Vote No. 33  
Substitute Senate Bill 5628

The legislature imposed, without a vote of the people, a tax on heavy equipment rentals to consumers by heavy equipment rental property dealers, costing \$103,000,000 in its first ten years, for government spending.

This tax increase should be:

Repealed

Maintained

Advisory Vote No. 34  
Engrossed Substitute Senate Bill 6492

The legislature increased, without a vote of the people, the business and occupation tax rate for certain businesses, while reducing certain surcharges, costing \$843,000,000 in its first ten years, for government spending.

This tax increase should be:

Repealed

Maintained

Advisory Vote No. 35  
Engrossed Senate Bill 6690

The legislature increased, without a vote of the people, the business and occupation tax on manufacturers of commercial airplanes, including components or tooling, costing \$1,024,000,000 in its first ten years, for government spending.

This tax increase should be:

Repealed

Maintained

Proposed Constitutional Amendment

Engrossed Senate Joint Resolution No. 8212

The legislature has proposed a constitutional amendment on investment of public funds. This amendment would allow public money held in a fund for long-term care services and supports to be invested by governments as authorized by state law, including investments in private stocks.

Should this constitutional amendment be:

Approved

Rejected

Federal Partisan Offices

President/Vice President

4 Year Term Vote for One

Joseph R. Biden / Kamala D. Harris  
Democratic Party Nominees

Donald J. Trump / Michael R. Pence  
Republican Party Nominees

Jo Jorgensen / Jeremy "Spike" Cohen  
Libertarian Party Nominees

Howie Hawkins / Angela Walker  
Green Party Nominees

Gloria La Riva / Sunil Freeman  
Socialism and Liberation Party Nominees

Alyson Kennedy / Malcolm M. Jarrett  
Socialist Workers Party Nominees

\_\_\_\_\_  
Write-in

**Read: Each candidate for President and Vice President is the official nominee of a political party. For other partisan offices, each candidate may state a political party that he or she prefers. A candidate's preference does not imply that the candidate is nominated or endorsed by the party, or that the party approves of or associates with that candidate.**

U.S. Representative 5th District

2 Year Term Vote for One

Cathy McMorris Rodgers  
(Prefers Republican Party)

Dave Wilson  
(Prefers Democratic Party)

\_\_\_\_\_  
Write-in

State Partisan Offices

Governor

4 Year Term Vote for One

Jay Inslee  
(Prefers Democratic Party)

Loren Culp  
(Prefers Republican Party)

\_\_\_\_\_  
Write-in

Lt. Governor

4 Year Term Vote for One

Denny Heck  
(Prefers Democratic Party)

Marko Liias  
(Prefers Democratic Party)

\_\_\_\_\_  
Write-in

Secretary of State

4 Year Term Vote for One

Kim Wyman  
(Prefers Republican Party)

Gael Tarleton  
(Prefers Democratic Party)

\_\_\_\_\_  
Write-in

State Treasurer

4 Year Term Vote for One

Mike Pellicciotti  
(Prefers Democratic Party)

Duane A. Davidson  
(Prefers Republican Party)

\_\_\_\_\_  
Write-in

State Auditor

4 Year Term Vote for One

Pat (Patrice) McCarthy  
(Prefers Democratic Party)

Chris Leyba  
(Prefers Republican Party)

\_\_\_\_\_  
Write-in

State Attorney General

4 Year Term Vote for One

Bob Ferguson  
(Prefers Democratic Party)

Matt Larkin  
(Prefers Republican Party)

\_\_\_\_\_  
Write-in

Commissioner of Public Lands

4 Year Term Vote for One

Hilary Franz  
(Prefers Democratic Party)

Sue Kuehl Pederson  
(Prefers Republican Party)

\_\_\_\_\_  
Write-in

Continue Voting -->

**State Nonpartisan Office**

**Superintendent of Public Instruction**  
4 Year Term Vote for One

Chris Reykdal  
 Maia Espinoza  
 \_\_\_\_\_  
Write-in

**State Partisan Offices**

**Insurance Commissioner**  
4 Year Term Vote for One

Mike Kreidler  
(Prefers Democratic Party)  
 Chirayu Avinash Patel  
(Prefers Republican Party)  
 \_\_\_\_\_  
Write-in

**Representative 13th District Position No. 1**  
2 Year Term Vote for One

Tom Dent  
(Prefers Republican Party)  
 Eduardo Castañeda-Díaz  
(Prefers Democratic Party)  
 \_\_\_\_\_  
Write-in

**Representative 13th District Position No. 2**  
2 Year Term Vote for One

Alex Ybarra  
(Prefers Republican Party)  
 \_\_\_\_\_  
Write-in

**County Partisan Offices**

**Commissioner District No. 1**  
4 Year Term Vote for One

Mark R. Stedman  
(Prefers Republican Party)  
 \_\_\_\_\_  
Write-in

**Commissioner District No. 2**  
4 Year Term Vote for One

Scott Hutsell  
(Prefers Republican Party)  
 \_\_\_\_\_  
Write-in

**Judicial Nonpartisan Offices**

**Supreme Court Justice Position No. 3**  
6 Yr Short and Full Vote for One

Dave Larson  
 Raquel Montoya-Lewis  
 \_\_\_\_\_  
Write-in

**Supreme Court Justice Position No. 4**  
6 Year Term Vote for One

Charles W. Johnson  
 \_\_\_\_\_  
Write-in

**Supreme Court Justice Position No. 6**  
2 Year Unexpired Term Vote for One

Richard S. Serns  
 G. Helen Whitener  
 \_\_\_\_\_  
Write-in

**Supreme Court Justice Position No. 7**  
6 Year Term Vote for One

Debra L. Stephens  
 \_\_\_\_\_  
Write-in

**Court of Appeals, Division 3, District 1 - Judge Position 2**  
6 Year Term Vote for One

Marshall Casey  
 Tracy Arlene Staab  
 \_\_\_\_\_  
Write-in

**Superior Court Judge**  
4 Year Term Vote for One

Jeff Barkdull  
 Dan B. Johnson  
 \_\_\_\_\_  
Write-in

**County Nonpartisan Office**

**Public Utility District No. 1 Commissioner 1**  
6 Year Term Vote for One

Grant Wagner  
 \_\_\_\_\_  
Write-in

**Local Issues**

**Grand Coulee Dam School District No. 301J Proposition No. 1**  
Supplemental Educational Programs and Operation Levy

The Board of Directors of Grand Coulee Dam School District No. 301J adopted Resolution No. 19-20/07, concerning supplemental funding for educational programs and operation. This proposition would authorize the District to supplement, in response to recent legislative changes, the remaining two years of the levy approved at the February 2019 special election, by levying the following excess taxes on all taxable property within the District, for support of educational programs and operation expenses not funded by the State:

Collection Year	Estimated Levy Rate/\$1,000 Assessed Value	Supplemental Levy Amount
2021	\$1.00	\$302,522
2022	\$1.00	\$311,597

all as provided in Resolution No. 19-20/07. Should this proposition be approved?

LEVY...YES  
 LEVY...NO

**Cemetery District No. 7 Proposition No. 1**  
Special Election for Regular Property Tax Levy for Cemetery Maintenance and Operation

"The Board of Commissioners of Lincoln County Cemetery District No. 7 adopted Resolution 2020-01 concerning a proposition for cemetery maintenance and operation. This proposition would authorize the District to levy the following excess tax upon all taxable property within the District for support of the District's cemetery maintenance and operation expenses.

Collection Year	Approximate Levy Rate per \$1,000 Assessed Value	Levy Amount
2021	\$0.31	\$35,000

All as provided in Resolution 2020-01. Should this proposition be approved?"

Levy YES  
 Levy NO

**Proposed Odessa Metropolitan Park District Proposition No. 1**  
Creation of the Odessa Metropolitan Park District

Ballot Proposition No. 1 concerns formation of the Odessa Metropolitan Park District, a metropolitan park district. This proposition creates the Odessa Metropolitan Park District to provide ongoing funding to acquire, maintain, operate, and improve the Odessa swimming pool and related facilities. The District has the same boundaries as that portion of the Odessa School District lying within Lincoln County, shall be governed by a Board composed of five members elected at large for staggered terms, and exercises powers given to metropolitan park districts in state law, including levying property taxes and contracting with the Town of Odessa to perform District functions. The one limitation on the proposed Odessa Metropolitan Park District is that it may only exercise its powers and authorities with respect to the Town of Odessa swimming pool and related facilities.

Are you:

For the formation of a metropolitan park district to be governed by a five-member Board of Commissioners, elected at large for staggering terms.  
 Against the formation of a metropolitan park district.

**Even if you have voted No on the above, you are eligible to vote on the Candidates.**

Proposed Odessa Metropolitan Park District continued	
<b>Commissioner Position No. 1</b>	
Vote for One	
<input type="checkbox"/>	Kelsey L. Scrupps
<input type="checkbox"/>	----- Write-in
<b>Commissioner Position No. 2</b>	
Vote for One	
<input type="checkbox"/>	Blayne Albertson
<input type="checkbox"/>	----- Write-in
<b>Commissioner Position No. 3</b>	
Vote for One	
<input type="checkbox"/>	Kimberly M. Ryan
<input type="checkbox"/>	----- Write-in
<b>Commissioner Position No. 4</b>	
Vote for One	
<input type="checkbox"/>	Raye C. Galloway-Scrupps
<input type="checkbox"/>	----- Write-in
<b>Commissioner Position No. 5</b>	
Vote for One	
<input type="checkbox"/>	Alyson M. Wilson
<input type="checkbox"/>	----- Write-in

**This page intentionally left blank**