

Vote Both Sides

Official Ballot
Lincoln County, Washington
November 06, 2018

General Election

Precinct 41

Instructions

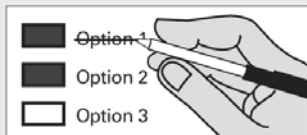
How to vote



Use a dark blue or black ink pen to completely fill in the box to the left of your choice.

Vote for one in each race. If you vote for more than one, no votes will be counted for that race.

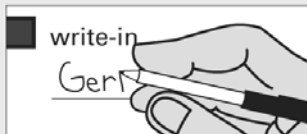
If you make a mistake



Draw a line through the entire measure response or candidate's name.

Then you may make another choice.

Optional write-in



To vote for a candidate not listed for that race, fill in the box to the left of "write-in" and print the name on the line.

Who donates to campaigns?

View contributors for candidates and measures

Public Disclosure Commission

www.pdc.wa.gov
Toll Free (877) 601-2828

Start voting here

State Measures

Initiatives to the People

Initiative Measure No. 1631

Initiative Measure No. 1631 concerns pollution. This measure would charge pollution fees on sources of greenhouse gas pollutants and use the revenue to reduce pollution, promote clean energy, and address climate impacts, under oversight of a public board.

Should this measure be enacted into law?

- Yes
- No

Initiative Measure No. 1634

Initiative Measure No. 1634 concerns taxation of certain items intended for human consumption. This measure would prohibit new or increased local taxes, fees, or assessments on raw or processed foods or beverages (with exceptions), or ingredients thereof, unless effective by January 15, 2018, or generally applicable.

Should this measure be enacted into law?

- Yes
- No

Initiative Measure No. 1639

Initiative Measure No. 1639 concerns firearms. This measure would require increased background checks, training, age limitations, and waiting periods for sales or delivery of semiautomatic assault rifles; criminalize noncompliant storage upon unauthorized use; allow fees; and enact other provisions.

Should this measure be enacted into law?

- Yes
- No

Initiatives to the Legislature

Initiative Measure No. 940

Initiative Measure No. 940 concerns law enforcement. This measure would require law enforcement to receive violence de-escalation, mental-health, and first-aid training, and provide first-aid; and change standards for use of deadly force, adding a "good faith" standard and independent investigation.

Should this measure be enacted into law?

- Yes
- No

Advisory Votes

Advisory Vote No. 19

Engrossed Second Substitute Senate Bill 6269

The legislature expanded, without a vote of the people, the oil spill response and administration taxes to crude oil or petroleum products received by pipeline, costing \$13,000,000 over ten years for government spending.

This tax increase should be:

- Repealed
- Maintained

READ: If a primary election was held for an office, the two candidates who received the most votes in the Primary advanced to the General Election. Each candidate for partisan office may state a political party that he or she prefers. A candidate's preference does not imply that the candidate is nominated or endorsed by the party, or that the party approves of or associates with that candidate

Federal: Partisan Offices

U.S. Senator

6 Year Term Vote for One

- Maria Cantwell (Prefers Democratic Party)
- Susan Hutchison (Prefers Republican Party)
- Write-in

U.S. Representative 5th District

2 Year Term Vote for One

- Cathy McMorris Rodgers (Prefers Republican Party)
- Lisa Brown (Prefers Democratic Party)
- Write-in

Continue Voting Next Page



12000430100020

Sample Ballot

000000078138

Sample Ballot

5223031252

Vote Both Sides

Official Ballot
Lincoln County, Washington
November 06, 2018

General Election

Precinct 41

State: Partisan Offices

Senator 13th District
4 Year Term Vote for One
 Judy Warnick
(Prefers Republican Party)
 Write-in

Representative 13th District
Position No. 1
2 Year Term Vote for One
 Tom Dent
(Prefers Republican Party)
 Jesse Hegstrom Oakey
(Prefers Democratic Party)
 Write-in

Representative 13th District
Position No. 2
2 Year Term Vote for One
 Matt Manweller
(Prefers Republican Party)
 Sylvia Hammond
(Prefers Democratic Party)
 Write-in

County: Partisan Offices

Assessor
Short & 4 Year Term Vote for One
 J Scott Liebing
(Prefers Republican Party)
 Write-in

Auditor
4 Year Term Vote for One
 Shelly Johnston
(Prefers Republican Party)
 Write-in

Clerk
4 Year Term Vote for One
 Peggy A Semprimoznik
(Prefers Republican Party)
 Write-in

Commissioner
District No. 3
4 Year Term Vote for One
 Rob Coffman
(Prefers Republican Party)
 Write-in

County: Partisan Offices Continued

Prosecuting Attorney
4 Year Term Vote for One
 Jeffrey S. Barkdull
(Prefers Republican Party)
 Write-in

Sheriff
4 Year Term Vote for One
 Wade W. Magers
(Prefers Republican Party)
 Write-in

Treasurer
4 Year Term Vote for One
 Jody Howard
(Prefers Republican Party)
 Write-in

Judicial: Nonpartisan Offices

Supreme Court Justice
Position No. 2
6 Year Term Vote for One
 Susan Owens
 Write-in

Supreme Court Justice
Position No. 8
6 Year Term Vote for One
 Nathan Choi
 Steve Gonzalez
 Write-in

Supreme Court Justice
Position No. 9
6 Year Term Vote for One
 Sheryl Gordon McCloud
 Write-in

Court of Appeals
Division 3, District 1
Position No. 1
6 Year Term Vote for One
 Laurel Siddoway
 Write-in

District Court Judge
4 Year Term Vote for One
 Dan B. Johnson
 Write-in

County: Nonpartisan Offices

Public Utility District No. 1
Commissioner 2
6 Year Term Vote for One
 Loren Rux
 Write-in

Local Issues

Park & Recreation District No. 3
Proposition No. 1
Regular Six Year Levy for Maintenance and Operation of the Davenport Memorial Hall and Davenport Water Park - \$111,000 (each year)

"Shall a regular levy of \$111,000 be collected in each of six years, 2019, 2020, 2021, 2022, 2023 and 2024, requiring approximately \$.43 per each \$1,000 of assessed valuation, for Maintenance and Operation of the Davenport Memorial Hall and Davenport Water Park which are owned by Lincoln County Park & Recreation District No. 3, Lincoln County, Washington?"

LEVY YES
 LEVY NO

12000430200027

Sample Ballot

000000078241

Sample Ballot

5223031252