

Official Ballot  
Special Election  
Lincoln County, Washington  
February 13, 2018

Precinct *Sample*

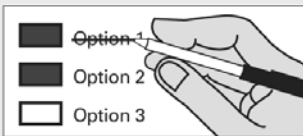
**Instructions**

**How to vote**



Use a dark blue or black ink pen to completely fill in the box to the left of your choice.  
Vote for one in each race. If you vote for more than one, no votes will be counted for that race.

**If you make a mistake**



Draw a line through the entire measure response or candidate's name.  
Then you may make another choice.

**Who donates to campaigns?**

View contributors for candidates and measures

**Public Disclosure Commission**

www.pdc.wa.gov  
Toll Free (877) 601-2828

**Instruction Text:**

Secure your voted ballot in the white Security Envelope and place in the green Mailing Envelope. Sign and date the Affidavit on back. If your ballot is damaged to the point it is not useable, you may get a replacement by contacting the Election Office at: (509) 725-4971 or (800) 725-3031. Please affix first class postage, (\$0.50) or if you choose not to mail your ballot you may deliver it to: Lincoln County Auditor's Office, Lincoln County Courthouse, 450 Logan, Davenport or one of the designated drop boxes before 8:00 p.m. on Election Day. To find out more about drop box locations or the Accessible Voting Unit, visit our website: [www.co.lincoln.wa.us](http://www.co.lincoln.wa.us)

**School District**

**REARDAN-EDWALL SCHOOL DISTRICT NO. 9  
Proposition No. 1**

Replacement Educational Programs and Operation Levy

The Board of Directors of Reardan-Edwall School District No. 9 adopted Resolution No. 02-2017/18, concerning a proposition to finance educational programs and operation expenses. This proposition would authorize the District to meet the educational needs of its students by levying the following excess taxes, in place of an expiring levy, on all taxable property within the District, for support of the District's educational programs and operation expenses not funded by the State of Washington:

Collection Year	Estimated Levy Rate/\$1,000 Assessed Value	Levy Amount
2019	\$1.50	\$ 903,098
2020	\$1.50	\$1,083,718
2021	\$1.50	\$1,300,462

all as provided in Resolution No. 02-2017/18. Should this proposition be approved?

- LEVY YES
- LEVY NO

Continue voting next page



Test Ballot 11000550100031

000000007116

Test Ballot

5093031270

Official Ballot  
Special Election  
Lincoln County, Washington  
February 13, 2018

Precinct *Sample*

**CRESTON SCHOOL DISTRICT NO. 73**  
**Proposition No. 1**

Replacement Educational Programs and Operation Levy

The Board of Directors of Creston School District No. 73 adopted Resolution No.17-13, concerning a proposition to finance educational programs and operation expenses. This proposition would authorize the District to meet educational needs of students by levying the following excess taxes, in place of an expiring levy, on all taxable property within the District, for support of the District's General Fund educational programs and operation expenses not funded by the State of Washington:

Collection Year	Assessed Value	Estimated Levy Rate/\$1,000	Levy Amount
2019		\$1.06	\$275,000
2020		\$1.06	\$275,000

all as provided in Resolution No. 17-13. Should this proposition be approved?

- LEVY YES
- LEVY NO

**ODESSA SCHOOL DISTRICT NO. 105-157-166J**  
**Proposition No. 1**

Educational Programs & Operation Replacement Levy

The Board of Directors of Odessa School District No. 105-157-166J adopted Resolution No. 2-2017-18, concerning a proposition to finance educational programs and operation expenses. This proposition would authorize the District to levy the following excess taxes, in the place of the expiring levy, on all taxable property within the District, for the District's educational programs and operation expenses not funded by the State of Washington:

Collection Year	Assessed Value	Estimated Levy Rate/\$1,000	Levy Amount
2019		\$1.50	\$386,000

all as provided in Resolution No. 2-2017-18 and subject to legal limits on levy rates and amounts at the time of levy. Should this proposition be approved?

- LEVY YES
- LEVY NO

**ODESSA SCHOOL DISTRICT NO. 105-157-166J**  
**Proposition No. 2**

Replacement Capital Levy For School Improvements

"Shall a replacement excess levy of \$110,000 be collected in the year 2019, requiring approximately \$0.46 per \$1,000 of assessed valuation for the modernization of school facilities by making health, safety and energy efficiency improvements to school facilities of Odessa School District #105, Lincoln County, joint with #157, Adams County and #166J, Grant County?"

- LEVY YES
- LEVY NO

**WILBUR SCHOOL DISTRICT # 200**  
**Proposition No. 1**

Two-Year Replacement Educational Programs and Operation Levy

The Board of Directors of Wilbur School District #200 adopted Resolution No. 01-18, concerning a proposition to finance educational programs and operation expenses. This proposition would authorize the District to levy the following excess taxes, to replace an expiring levy, on all taxable property within the District, for support of the District's educational programs and operation expenses not funded by the State:

Collection Year	Assessed Value	Approximate Levy Rate/\$1,000	Levy Amount
2019		\$1.50	\$305,000
2020		\$1.50	\$350,000

all as provided in Resolution No. 01-18, and subject to legal limits on levy rates and amounts at the time of the levy. Should this proposition be approved?

- LEVY YES
- LEVY NO

Continue voting next page



Test Ballot 11000550200038

000000007219

Test Ballot

5093031270

Official Ballot  
Special Election  
Lincoln County, Washington  
February 13, 2018

Precinct *Sample*

HARRINGTON SCHOOL DISTRICT NO. 204  
Proposition No. 1

Replacement Operation Levy

A one year levy: The Board of Directors of Harrington School District 204 adopted Resolution No. 04-17, concerning a proposition to finance operation expenses. This proposition would authorize the district to levy the following excess taxes, in place of an expiring levy, upon all taxable property within the district, for support of the district's General Fund educational operation expenses:

Collection Year	Approximate Levy Rate/\$1000 Assessed Value	Total Levy Amount
2019	\$1.50	\$270,000

all as provided in Resolution No. 04-17, should this proposition be approved?

LEVY YES

LEVY NO

HARRINGTON SCHOOL DISTRICT NO. 204  
Proposition No. 2

Capital Projects Levy

A one year levy: The Board of Directors of Harrington School District 204 adopted Resolution No. 05-17, concerning a proposition to finance operation expenses. This proposition would authorize the district to levy the following excess taxes upon all taxable property within the district, for support of Harrington School District Capital Projects: technology enhancement and upgrades (teacher computers, interactive white boards, etc.), communications improvement (phone system), cafeteria improvements (new tables and chairs), shop improvements (electrical) and other small, facilities upgrades.

Collection Year	Approximate Levy Rate/\$1000 Assessed Value	Total Levy Amount
2019	\$1.22	\$220,000

all as provided in Resolution No. 05-17, should this proposition be approved?

LEVY YES

LEVY NO

DAVENPORT SCHOOL DISTRICT NO. 207  
Proposition No. 1

Capital Levy For Instructional Technology, Safety, and Facility Improvements

The Board of Directors of Davenport School District No. 207 adopted Resolution No. 17-04, concerning a proposition to finance instructional technology, safety and facility improvements. This proposition would authorize the District to levy the following excess taxes, on all taxable property within the District, to make instructional technology, safety and facilities improvements (including acquiring instructional technology equipment, replacing classroom computers, and providing related training and support; installing security cameras and entry/access controls; replacing or repairing roofs; upgrading classrooms):

Collection Year	Estimated Levy Rate/\$1,000 Assessed Value	Levy Amount
2019	\$0.90	\$253,000
2020	\$0.90	\$260,000

all as provided in Resolution No. 17-04. Should this proposition be approved?

LEVY YES

LEVY NO

Test Ballot 21000550300030  
000000007116

Test Ballot

5093031270

Continue voting next page



Official Ballot  
Special Election  
Lincoln County, Washington  
February 13, 2018

Precinct *Sample*

DAVENPORT SCHOOL DISTRICT NO. 207  
Proposition No. 2

Levy to Purchase And Repair School Buses

The Board of Directors of Davenport School District No. 207 adopted Resolution No. 17-05, concerning a proposition to finance the purchase and repair of school buses. This proposition would authorize the District to levy the following excess taxes on all taxable property within the District to improve safety and operational efficiency by purchasing new school buses and repairing existing school buses to support the District's aging bus fleet:

Collection Year	Assessed Value	Estimated Levy Rate/\$1,000	Levy Amount
2019		\$0.45	\$127,000
2020		\$0.45	\$131,000

all as provided in Resolution No. 17-05. Should this proposition be approved?

LEVY YES

LEVY NO

RITZVILLE SCHOOL DISTRICT NO. 160-67  
Proposition No. 1

Replacement Educational Programs And Operation Levy

The Board of Directors of Ritzville School District No. 160-67 adopted Resolution No. 2017-007, concerning a proposition to finance educational programs and operation expenses. This proposition would authorize the District to levy the following excess taxes, in place of an expiring levy, upon all taxable property within the District, for support of the District's General Fund educational programs and operation expenses not funded by the State of Washington:

Collection Year	Assessed Value	Estimated Levy Rate/\$1,000	Levy Amount
2019		\$1.50	\$596,719
2020		\$1.50	\$656,391

all as provided in Resolution No. 2017-007. Should this proposition be approved?

Levy, Yes

Levy, No

**Hospital District**

HOSPITAL DISTRICT NO. 1  
Proposition No. 1

Replacement of Expiring One-Year Operation and Maintenance Levy

The Commission of Public Hospital District No. 1, Lincoln County, adopted Resolution No. 110917.03 concerning a proposition to finance operation and maintenance expenses. This proposition would authorize the District to maintain current levels of essential health care services by levying excess property taxes, in place of an expiring levy, at the estimated levy rate of \$2.67 per \$1,000 of assessed value upon all taxable property within the District for collection in 2019 to provide a total of \$642,000 for paying part of the District's operation and maintenance expenses, all as provided in Resolution No. 110917.03. Should this proposition be approved?

LEVY YES

LEVY NO

Test Ballot 21000550400037

000000007219

Test Ballot

5093031270