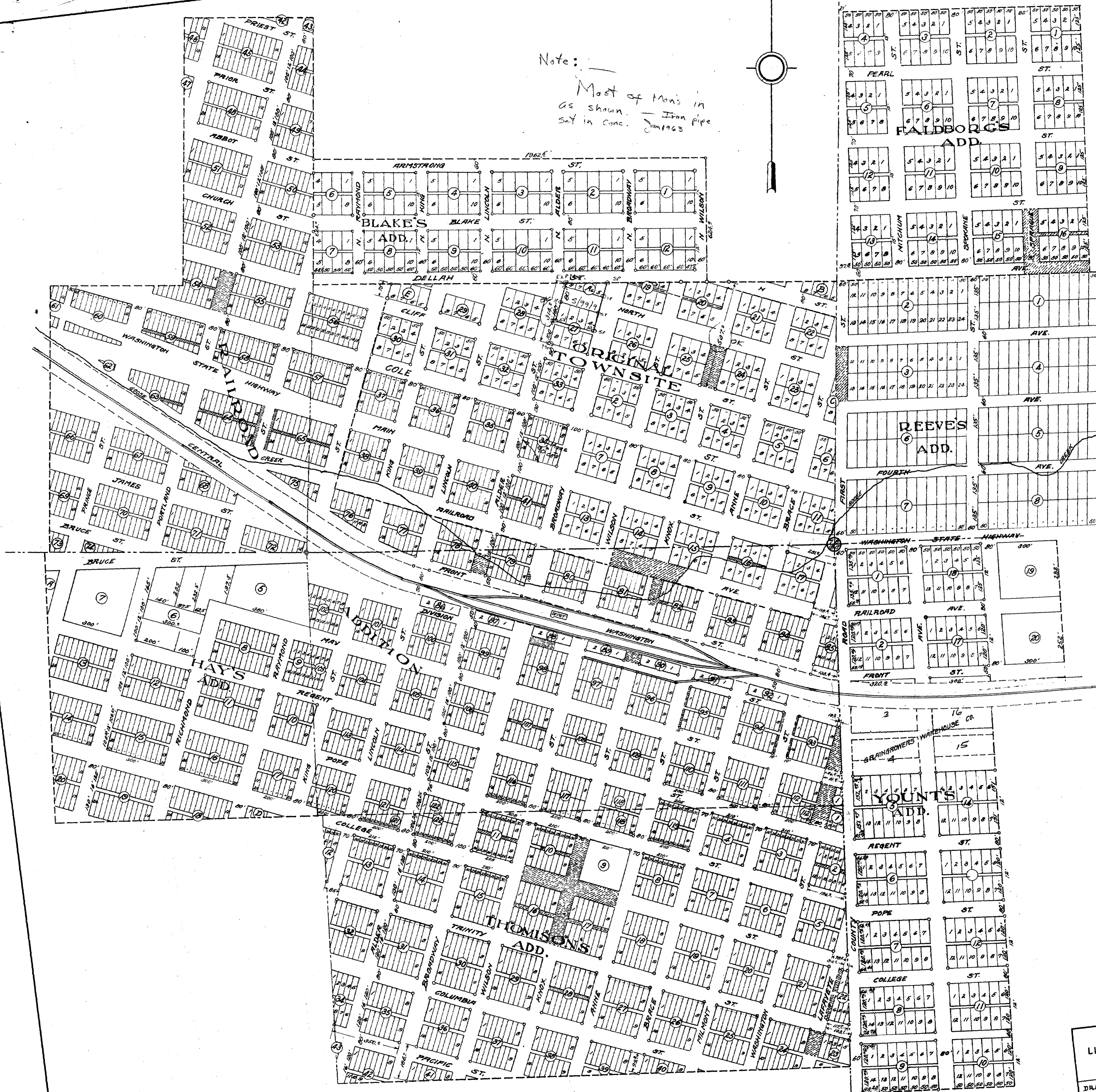
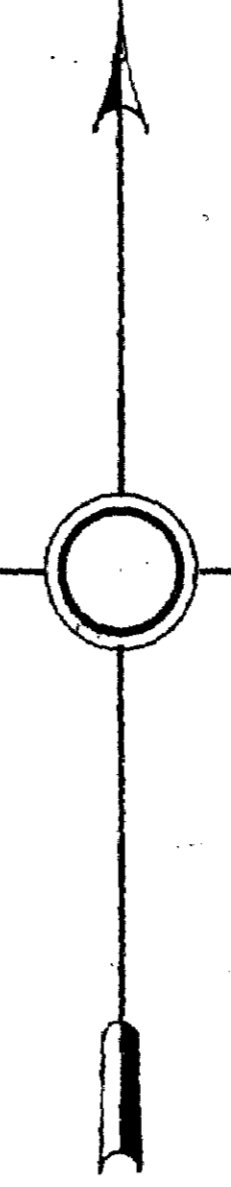


Note: —
 Most of Mans in
 as shown. — Iron pipe
 set in conc. Jan 1923



Scale 1 inch = 200 ft.
 Monument
 Closed Streets

WILBUR
 LINCOLN COUNTY WASHINGTON
 1955
 ALVIN T. LYSE, C.E.
 DRAWN BY [Signature]
 CHECKED BY [Signature]
 TRACED BY [Signature]
 APPROVED [Signature]
 MAYOR