

Official Ballot
Presidential Primary
March 12, 2024
Lincoln County

Important Presidential Primary
Voting Instructions

(Refer to insert for detailed instructions on how to vote.)

For your vote to count you must:

- Check one party box on the return envelope.
- Vote for one candidate from the party you marked on your return envelope.
- Sign your return envelope.

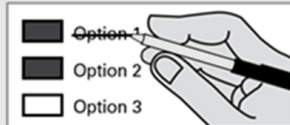
How to vote



Use a dark blue or black ink pen to completely fill in the box to the left of your choice.

Vote for one candidate on the ballot. If you vote for more than one, no votes will be counted.

If you make a mistake



Draw a line through the entire candidate's name. Then you may make another choice.

Optional write-in



To vote for a candidate not listed for that race, fill in the box to the left of 'write-in' and print the name on the line.

i Who donates to campaigns?
View contributions for federal candidates

Federal Election Commission
www.fec.gov
Toll Free (800) 424-9530

Voting in BOTH Democratic and Republican Contests will void your ballot.

Democratic Party

President of the United States

Vote for only one candidate within the party you marked on your envelope. If you marked Democratic party on your return envelope, you must vote for a Democratic candidate below.

Joseph R Biden Jr

Dean Phillips

Marianne Williamson

Uncommitted Delegates

Write-in

Please postmark or return your ballot by Tuesday, March 12. Thank you.

Voting in BOTH Democratic and Republican Contests will void your ballot.

Republican Party

President of the United States

Vote for only one candidate within the party you marked on your envelope. If you marked Republican party on your return envelope, you must vote for a Republican candidate below.

Chris Christie

Ron DeSantis

Nikki Haley

Vivek Ramaswamy

Donald J. Trump

Write-in

Please postmark or return your ballot by Tuesday, March 12. Thank you.

This page intentionally left blank