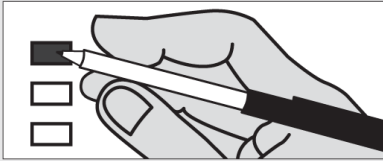


Instructions

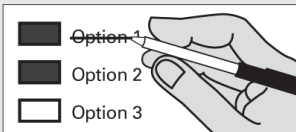
How to vote



Use a dark blue or black ink pen to completely fill in the box to the left of your choice.

Vote for one in each race. If you vote for more than one, no votes will be counted for that race.

If you make a mistake



Draw a line through the entire measure response or candidate's name.

Then you may make another choice.

i Who donates to campaigns?
 View contributors for candidates and measures

Public Disclosure Commission

www.pdc.wa.gov
 Toll Free (877) 601-2828

Start Voting Next Column -->

School District

**Sprague School District No. 8
 Proposition No. 1**

Replacement Educational Programs and Operation Levy

The Board of Directors of Sprague School District No. 8 adopted Resolution No. 09-2022, concerning a proposition to finance educational programs and operation expenses. This proposition would authorize the District to levy the following excess taxes, in place of an expiring levy, on all taxable property within the District, for support of the District's educational programs and operation expenses not funded by the State of Washington:

Collection Year	Estimated Levy Rate/ Assessed Value \$1,000	Levy Amount
2024	\$1.51	\$215,000
2025	\$1.43	\$215,000

all as provided in Resolution No. 09-2022.
 Should this proposition be approved?

LEVY...YES

LEVY...NO

46808

46808

**Odessa School District No. 105-157-166J
Proposition No. 1**

Replacement Educational Programs and Operational Levy

The Board of Directors of Odessa School District No. 105-157-166J adopted Resolution No. 1-2022-23, concerning a proposition to finance educational programs and operation expenses. This proposition would authorize the District to levy the following excess taxes, in the place of the expiring levy, on all taxable property within the District, for the District's educational programs and operation expenses not funded by the State of Washington:

Collection Year	Estimated Levy Rate \$1,000 Assessed Value	Levy Amount
2024	\$1.86	\$600,000

all as provided in Resolution No. 1-2022-23 and subject to legal limits on levy rates and amounts at the time of levy. Should this proposition be approved?

LEVY YES

LEVY NO

**Odessa School District No. 105-157-166J
Proposition No. 2**

Replacement Capital Levy For School Improvements

"Shall a replacement excess levy of \$125,000 be collected in the year 2024, requiring approximately \$0.37 per \$1,000 of assessed valuation for the modernization of school facilities by making technology, health, safety and energy efficiency improvements to school facilities of Odessa School District #105, Lincoln County, joint with #157, Adams County and #166J, Grant County?"

LEVY YES

LEVY NO

**Odessa School District No. 105-157-166J
Proposition No. 3**

Levy to Purchase New School Bus

The Board of Directors of Odessa School District No. 105-157-166J adopted Resolution No. 3-2022-23, concerning a proposition to finance a new school bus. This proposition would authorize the District to levy the following excess taxes, on all taxable property within the District, to improve safety and operational efficiency by purchasing a new school bus to begin replacing the District's aging bus fleet:

Collection Year	Estimated Levy Rate \$1,000 Assessed Value	Levy Amount
2024	\$0.47	\$150,000

all as provided in Resolution No. 3-2022-23. Should this proposition be approved?

LEVY YES

LEVY NO

**Wilbur School District No. 200
Proposition No. 1**

Replacement Capital Levy for Safety, Efficiency and Technology Improvements

The Board of Directors of Wilbur School District No. 200 adopted Resolution No. 01-23, concerning a proposition for a replacement levy for capital improvements. This proposition would authorize the District to levy the following excess taxes, replacing an expiring levy, on all taxable property within the District, to make safety, efficiency and technology improvements (including constructing single point entry vestibules and installing other access controls; upgrading HVAC; enhancing Emerson Park Sports Fields; acquiring instructional technology equipment):

Collection Year	Estimated Levy Rate/ \$1,000 Assessed Value	Levy Amount
2024	\$1.00	\$199,000
2025	\$1.00	\$199,000
2026	\$1.00	\$199,000

all as provided in Resolution No. 01-23.
Should this proposition be approved?

LEVY...YES

LEVY...NO

Hospital District

**Lincoln County Hospital District No. 1
Proposition No. 1**

Replacement of Expiring One-Year Operation and Maintenance Levy

The Commission of Public Hospital District No. 1, Lincoln County, adopted Resolution No. 111022.03 concerning a proposition to finance operation and maintenance expenses. This proposition would authorize the District to maintain current levels of essential health care services by levying excess property taxes, in place of an expiring levy, at the estimated levy rate of \$2.36 per \$1,000 of assessed value upon all taxable property within the District for collection in 2024 to provide a total of \$703,119 for paying part of the District's operation and maintenance expenses, all as provided in Resolution No. 111022.03. Should this proposition be approved?

LEVY YES

LEVY NO

46808

February Special Election
February 14, 2023
Lincoln County, Washington

Cemetery District

**Cemetery District No. 7
Proposition No. 1**

Special Election for Regular Property Tax Levy for Cemetery Maintenance and Operation

"The Board of Commissioners of Lincoln County Cemetery District No. 7 adopted Resolution 2022-01 concerning a proposition for cemetery maintenance and operation. This proposition would authorize the District to levy the following excess tax upon all taxable property within the District for support of the District's cemetery maintenance and operation expenses.

Collection Year	Approximate Levy Rate per \$1,000 Assessed Value	Levy Amount
2024	\$0.28	\$35,000

All as provided in Resolution 2022-01. Should this proposition be approved?"

Levy YES

Levy NO

46808