

Instructions

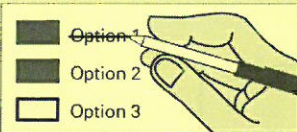
How to vote



Use a dark blue or black ink pen to completely fill in the box to the left of your choice.

Vote for one in each race. If you vote for more than one, no votes will be counted for that race.

If you make a mistake



Draw a line through the entire measure response or candidate's name.

Then you may make another choice.

Who donates to campaigns?
View contributors for candidates and measures

Public Disclosure Commission

www.pdc.wa.gov
Toll Free (877) 601-2828

Start Voting Next Column -->

School District

**Sprague School District No. 8
Proposition No. 1**

Replacement Educational Programs and Operation Levy

The Board of Directors of Sprague School District No. 8 adopted Resolution No. 8-2020, concerning a proposition to finance educational programs and operation expenses. This proposition would authorize the District to levy the following excess taxes, in place of an expiring levy, on all taxable property within the District, for support of the District's educational programs and operation expenses not funded by the State of Washington:

Collection Year	Estimated Levy Rate/\$1,000 Assessed Value	Levy Amount
2022	\$1.68	\$195,000
2023	\$1.68	\$195,000

all as provided in Resolution No. 8-2020. Should this proposition be approved?

LEVY YES

LEVY NO

Continue Voting -->

11628

**Reardan-Edwall School District No. 9
Proposition No. 1**

Replacement Educational Programs and Operation Levy

The Board of Directors of Reardan-Edwall School District No. 9 adopted Resolution No. 01-2020/21, concerning a proposition to finance educational programs and operation expenses. This proposition would authorize the District to meet the educational needs of its students by levying the following excess taxes, in place of an expiring levy, on all taxable property within the District, for support of the District's educational programs and operation expenses not funded by the State of Washington:

Collection Year	Estimated Levy Rate/\$1,000 Assessed Value	Levy Amount
2022	\$2.00	\$1,300,112
2023	\$2.00	\$1,358,617
2024	\$2.00	\$1,419,755

all as provided in Resolution No. 01-2020/21. Should this proposition be approved?

LEVY YES

LEVY NO

**Odessa School District No. 105-157-166J
Proposition No. 1**

Replacement Educational Programs and Operational Levy

The Board of Directors of Odessa School District No. 105-157-166J adopted Resolution No. 1-2020-21, concerning a proposition to finance educational programs and operation expenses. This proposition would authorize the District to levy the following excess taxes, in the place of the expiring levy, on all taxable property within the District, for the District's educational programs and operation expenses not funded by the State of Washington:

Collection Year	Estimated Levy Rate \$1,000 Assessed Value	Levy Amount
2022	\$2.04	\$550,000

all as provided in Resolution No. 1-2020-21 and subject to legal limits on levy rates and amounts at the time of levy. Should this proposition be approved?

LEVY YES

LEVY NO

Continue Voting -->

11628

**Odessa School District No. 105-157-166J
Proposition No. 2**

Replacement Capital Levy for School Improvements

"Shall a replacement excess levy of \$100,000 be collected in the year 2022, requiring approximately \$0.37 per \$1,000 of assessed valuation for the modernization of school facilities by making technology, health, safety and energy efficiency improvements to school facilities of Odessa School District #105, Lincoln County, joint with #157, Adams County and #166J, Grant County?"

LEVY YES

LEVY NO

Hospital District

**Lincoln County Hospital District No. 1
Proposition No. 1**

Replacement of Expiring One-Year Operation and Maintenance Levy

The Commission of Public Hospital District No. 1, Lincoln County, adopted Resolution No. 111220.03 concerning a proposition to finance operation and maintenance expenses. This proposition would authorize the District to maintain current levels of essential health care services by levying excess property taxes, in place of an expiring levy, at the estimated levy rate of \$2.38 per \$1,000 of assessed value upon all taxable property within the District for collection in 2022 to provide a total of \$661,000 for paying part of the District's operation and maintenance expenses, all as provided in Resolution No. 111220.03. Should this proposition be approved?

LEVY YES

LEVY NO

This page intentionally left blank