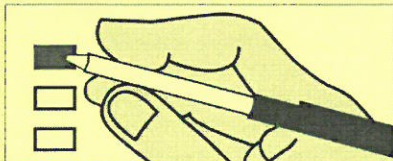


Special Election  
 Official Ballot  
 Lincoln County, Washington  
 February 11, 2020

Precinct *sample*

**Instructions**

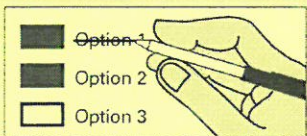
**How to vote**



Use a dark blue or black ink pen to completely fill in the box to the left of your choice.

Vote for one in each race. If you vote for more than one, no votes will be counted for that race.

**If you make a mistake**



Draw a line through the entire measure response or candidate's name.

Then you may make another choice.



**Who donates to campaigns?**

View contributors for candidates and measures

**Public Disclosure Commission**

www.pdc.wa.gov  
 Toll Free (877) 601-2828



**Start voting here**

**City**

City of Harrington  
 Proposition No. 1

Annexation of City of Harrington into Lincoln County Fire Protection District No. 6

Shall The City of Harrington be annexed into and become part of Lincoln County Fire Protection District No. 6.

Yes

No

**School District**

ALMIRA SCHOOL DISTRICT NO. 17  
 Proposition No. 1

Replacement Necessary Supplemental Education Programs and Operation Levy

"A two year replacement Necessary Supplemental Educational Programs and Operation levy: The Board of Directors of Almira School District No. 17 adopted Resolution No. 435, concerning a proposition to finance Necessary Supplemental Educational Programs and operation expenses. This proposition would authorize the district to levy the following excess taxes, in place of an expiring levy, upon all taxable property within the district for support of the district's General Fund educational programs and operation expenses:

Levy Collection Year	Approximate Levy Rate/\$1000	Levy Amount
2021	\$2.50	\$215,000
2022	\$2.50	\$215,000

all as provided in Resolution No. 435. Should this proposition be approved?"

LEVY YES

LEVY NO

**Continue voting next page**



Sample Ballot 12000010100011  
 300000004157

Sample Ballot

5763031222



Special Election  
 Official Ballot  
 Lincoln County, Washington  
 February 11, 2020

Precinct *sample*

CRESTON SCHOOL DISTRICT NO. 73  
 Proposition No. 1

Replacement Educational Programs and Operation Levy

The Board of Directors of Creston School District No. 73 adopted Resolution No. 01-19/20, concerning a proposition to finance educational programs and operation expenses. This proposition would authorize the District to meet the educational needs of its students by levying the following excess taxes, in place of an expiring levy, on all taxable property within the District, for support of the District's educational programs and operation expenses not funded by the State of Washington:

Collection Year	Estimated Levy	
	Assessed Value	Levy Amount
2021	\$0.91	\$240,000
2022	\$0.91	\$240,000

all as provided in Resolution No. 01-19/20. Should this proposition be approved?

- LEVY YES  
 LEVY NO

ODESSA SCHOOL DISTRICT NO. 105-157-166J  
 Proposition No. 1

Replacement Educational Programs and Operational Levy

The Board of Directors of Odessa School District No. 105-157-166J adopted Resolution No. 1-2019-20, concerning a proposition to finance educational programs and operation expenses. This proposition would authorize the District to levy the following excess taxes, in the place of the expiring levy, on all taxable property within the District, for the District's educational programs and operation expenses not funded by the State of Washington:

Collection Year	Estimated Levy	
	Assessed Value	Levy Amount
2021	\$2.35	\$600,000

all as provided in Resolution No. 1-2019-20 and subject to legal limits on levy rates and amounts at the time of levy. Should this proposition be approved?

- LEVY YES  
 LEVY NO

ODESSA SCHOOL DISTRICT NO. 105-157-166J  
 Proposition No. 2

Replacement Capital Levy for School Improvements

"Shall a replacement excess levy of \$100,000 be collected in the year 2021, requiring approximately \$0.39 per \$1,000 of assessed valuation for the modernization of school facilities by making health, safety and energy efficiency improvements to school facilities of Odessa School District #105, Lincoln County, joint with #157, Adams County and #166J, Grant County?"

- LEVY YES  
 LEVY NO

WILBUR SCHOOL DISTRICT NO. 200  
 Proposition No. 1

Replacement Educational Programs and Operation Levy

The Board of Directors of Wilbur School District No. 200 adopted Resolution No. 01-20, concerning a proposition to finance educational programs and operation expenses. This proposition would authorize the District to levy the following excess taxes, in place of an expiring levy, on all taxable property within the District, for support of the District's educational programs and operation expenses not funded by the State:

Collection Year	Estimated Levy	
	Assessed Value	Levy Amount
2021	\$2.50	\$465,000
2022	\$2.50	\$465,000

all as provided in Resolution No. 01-20 and subject to legal limits on levy rates and amounts at the time of levy. Should this proposition be approved?

- LEVY YES  
 LEVY NO

Continue voting next page



Sample Ballot 12000010200018

Sample Ballot 300000004254

Sample Ballot

5763031222



Special Election  
 Official Ballot  
 Lincoln County, Washington  
 February 11, 2020

Precinct *sample*

**WILBUR SCHOOL DISTRICT NO. 200**  
**Proposition No. 2**

Replacement Capital Levy for Safety, Efficiency and Technology Improvements

The Board of Directors of Wilbur School District No. 200 adopted Resolution No. 02-20, concerning a proposition for a levy for capital improvements. This proposition would authorize the District to levy the following excess taxes, in place of an expiring levy, on all taxable property within the District, to make safety, efficiency and technology improvements (including installing door locks, access controls and security cameras; upgrading HVAC and electrical systems; acquiring instructional technology equipment and infrastructure):

Collection Year	Estimated Levy	
	Assessed Value	Levy Amount
2021	\$1.15	\$211,000
2022	\$1.15	\$211,000
2023	\$1.15	\$211,000

all as provided in Resolution No. 02-20. Should this proposition be approved?

- LEVY YES
- LEVY NO

**DAVENPORT SCHOOL DISTRICT NO. 207**  
**Proposition No. 1**

Replacement Educational Programs and Operation Levy

The Board of Directors of Davenport School District No. 207 adopted Resolution No. 19-02, concerning a proposition to finance educational programs and operation expenses. This proposition would authorize the District to levy the following excess taxes, replacing an expiring levy, on all taxable property within the District, for essential educational programs and operation expenses not funded by the State (including teaching and support staff, smaller class sizes, maintenance, athletics and extracurricular activities):

Collection Year	Estimated Levy	
	Assessed Value	Levy Amount
2021	\$2.50	\$738,000
2022	\$2.50	\$760,000
2023	\$2.50	\$782,000
2024	\$2.50	\$805,000

all as provided in Resolution No. 19-02. Should this proposition be approved?

- LEVY YES
- LEVY NO

**HARRINGTON SCHOOL DISTRICT NO. 204**  
**Proposition No. 1**

Replacement Educational Programs and Operation Levy

The Board of Directors of Harrington School District No. 204 adopted Resolution No. 04-19, concerning a proposition to finance educational programs and operation expenses. This proposition would authorize the District to levy the following excess taxes, in place of an expiring levy, on all taxable property within the District, for support of the District's educational programs and operation expenses not funded by the State of Washington:

Collection Year	Estimated Levy	
	Assessed Value	Levy Amount
2021	\$2.50	\$375,000
2022	\$2.47	\$375,000

all as provided in Resolution No. 04-19. Should this proposition be approved?

- LEVY YES
- LEVY NO

**Continue voting next page**



Sample Ballot 22000010300010

300000004157

Sample Ballot

5763031222



Special Election  
Official Ballot  
Lincoln County, Washington  
February 11, 2020

Precinct *sample*

DAVENPORT SCHOOL DISTRICT NO. 207  
Proposition No. 2

Replacement Capital Levy For Instructional Technology, Safety And Facility Improvements

The Board of Directors of Davenport School District No. 207 adopted Resolution No. 19-03, concerning a proposition to finance instructional technology, safety and facility improvements. This proposition would authorize the District to levy the following excess taxes, replacing an expiring levy, on all taxable property within the District, to continue funding instructional technology, safety and facility improvements (including acquiring technology equipment and providing related support; upgrading security systems; replacing or repairing roofs; upgrading classrooms):

Collection Year	Assessed Value	Estimated Levy Rate/\$1,000	Levy Amount
2021		\$1.15	\$340,000
2022		\$1.15	\$350,000
2023		\$1.15	\$360,000
2024		\$1.15	\$370,000

all as provided in Resolution No. 19-03. Should this proposition be approved?

- LEVY YES
- LEVY NO

RITZVILLE SCHOOL DISTRICT NO. 160-67  
Proposition No. 1

Replacement Educational Programs and Operation Levy

The Board of Directors of Ritzville School District No. 160-67 adopted Resolution No. 2019-016, concerning a proposition to finance educational programs and operation expenses. This proposition would authorize the District to levy the following excess taxes, replacing an expiring levy, on all taxable property within the District, for support of the District's educational programs and operation expenses not funded by the State of Washington:

Collection Year	Assessed Value	Estimated Levy Rate/\$1000	Levy Amount
2021		\$2.31	\$877,500
2022		\$2.31	\$877,500

all as provided in Resolution No. 2019-016 and subject to legal limits on levy rates and amounts at the time of the levy. Should this proposition be approved?

- LEVY YES
- LEVY NO

Sample Ballot22000010400017

300000004254

Sample Ballot

5763031222

Continue voting next page





Special Election  
Official Ballot  
Lincoln County, Washington  
February 11, 2020

Precinct *sample*

RITZVILLE SCHOOL DISTRICT NO. 160-67  
Proposition No. 2

Capital Levy for Educational Technology Improvements

The Board of Directors of Ritzville School District No. 160-67 adopted Resolution No. 2019-017, concerning a proposition to finance educational technology improvements. This proposition would authorize the District to levy the following excess taxes on all taxable property within the District to acquire and install student and teacher technology devices and other technology equipment and infrastructure all to improve student access to technology:

Collection Year	Estimated Levy	
	Assessed Value	Levy Amount
2021	\$0.13	\$50,000
2022	\$0.13	\$50,000

all as provided in Resolution No. 2019-017. Should this proposition be approved?

- LEVY YES
- LEVY NO

WILSON CREEK SCHOOL DISTRICT NO. 167-202  
Proposition No. 1

Replacement Educational Programs and Operation Levy

The Board of Directors of Wilson Creek School District No. 167-202 adopted Resolution No. 19-02, concerning a proposition to finance educational programs and operation expenses. This proposition would authorize the District to levy the following excess taxes, in place of an expiring levy, on all taxable property within the District, for the District's educational programs and operation expenses not funded by the State of Washington:

Collection Year	Estimated Levy	
	Assessed Value	Levy Amount
2021	\$2.50	\$212,375
2022	\$2.50	\$212,375

all as provided in Resolution No. 19-02 and subject to legal limits on levy rates and amounts at the time of levy. Should this proposition be approved?

- LEVY...YES
- LEVY...NO

**Fire District**

**FIRE PROTECTION DISTRICT NO. 6  
Proposition No. 1**

Annexation of City of Harrington Into Lincoln County Fire Protection District No. 6

Shall the City of Harrington be annexed to and be a part of Lincoln County Fire Protection District No. 6.

- Yes
- No

**Hospital District**

**PUBLIC HOSPITAL DISTRICT NO. 1  
Proposition No. 1**

Replacement of Expiring One-Year Operation and Maintenance Levy

The Commission of Public Hospital District No. 1, Lincoln County, adopted Resolution No. 111419.03 concerning a proposition to finance operation and maintenance expenses. This proposition would authorize the District to maintain current levels of essential health care services by levying excess property taxes, in place of an expiring levy, at the estimated levy rate of \$2.58 per \$1,000 of assessed value upon all taxable property within the District for collection in 2021 to provide a total of \$654,500 for paying part of the District's operation and maintenance expenses, all as provided in Resolution No. 111419.03. Should this proposition be approved?

- LEVY YES
- LEVY NO

**Continue voting next page**



Sample Ballot32000010500009

300000004157

Sample Ballot

5763031222



Special Election  
Official Ballot  
Lincoln County, Washington  
February 11, 2020

Precinct *sample*

**Parks & Recreation District**

**PARK AND RECREATION DISTRICT NO. 1  
Proposition No. 1**

Regular Six Year Levy for Maintenance and Operation - \$6,600.00  
(each year)

"Shall Lincoln County Park & Recreation District No. 1 issue a regular  
levy of \$6,600.00 to be collected in each of six years, 2021, 2022, 2023,  
2024, 2025, and 2026, requiring approximately \$.23 per \$1,000.00 of  
assessed valuation for maintenance and operation of Lincoln County  
Park and Recreation District No. 1 of Edwall, Lincoln County,  
Washington?"

LEVY YES

LEVY NO

**PARK AND RECREATION DISTRICT NO. 2  
Proposition No. 1**

Regular Six Year Levy for Maintenance and Operation of the Almira  
Community Center - \$7,100.00 (each year)

"Shall Lincoln County Park & Recreation Dist. No. 2, Lincoln County,  
Washington, be authorized to a regular Levy of \$7,100.00 to be  
collected in each of six years: 2021, 2022, 2023, 2024, 2025 and 2026,  
requiring approximately \$0.15 per each \$1,000.00 of assessed  
valuation for Maintenance and Operation of the Almira Community  
Center in Almira, Washington, Lincoln County/dba Lincoln County Park  
& Recreation District No. 2, Lincoln County, Washington?"

LEVY YES

LEVY NO

Sample Ballot 32000010600016

300000004254

Sample Ballot

5763031222