

Official Ballot
 Special Election
 Lincoln County, Washington
 February 14, 2017

Precinct *sample*

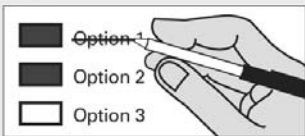
Instructions

How to vote



Use a dark blue or black ink pen to completely fill in the box to the left of your choice.
 Vote for one in each race. If you vote for more than one, no votes will be counted for that race.

If you make a mistake



Draw a line through the entire measure response or candidate's name.
 Then you may make another choice.

Who donates to campaigns?

View contributors for candidates and measures

Public Disclosure Commission

www.pdc.wa.gov
 Toll Free (877) 601-2828

Instruction Text:

Secure your voted ballot in the white Security Envelope and place in the green Mailing Envelope. Sign and date the Affidavit on back. If your ballot is damaged to the point it is not useable, you may get a replacement by contacting the Election Office at: (509) 725-4971 or (800) 725-3031. Please affix first class postage, (\$0.49) or if you choose not to mail your ballot you may deliver it to: Lincoln County Auditor's Office, Lincoln County Courthouse, 450 Logan, Davenport or one of the designated drop boxes before 8:00 p.m. on Election Day. To find out more about drop box locations or the Accessible Voting Unit, visit our website: www.co.lincoln.wa.us

Local Issue

**CITY OF SPRAGUE
 Proposition No. 1**

Regular Six Year Levy for Provision of Emergency Services Allowed by RCW 84.52.069

"Shall The City of Sprague be authorized to impose regular property tax levies of fifty cents (\$.50) per thousand dollars (\$1,000) of assessed valuation for each of six consecutive years, beginning in 2018, for Emergency Medical Care and Emergency Services?"

- LEVY YES
- LEVY NO

School District

**SPRAGUE SCHOOL DISTRICT NO. 8
 Proposition No. 1**

Replacement Maintenance and Operation Levy

A two-year levy: The Board of Directors of Sprague School District 8 adopted Resolution No. 6-2016, concerning a proposition to finance maintenance and operation expenses. This proposition would authorize the district to levy the following excess taxes, in place of an expiring levy, upon all taxable property within the district, for support of the district's General Fund educational maintenance and operation expenses:

Levy/ Collection Year	Approximate Levy Rate Per \$1,000 Assessed Value	Levy Amount
2018	\$3.12	\$295,000
2019	\$3.12	\$295,000

all as provided in Resolution No. 6-2016. Should this proposition be approved?

- LEVY YES
- LEVY NO

Sample Ballot 12000360100067
 600000007149

Sample Ballot

4673031261

Vote Both Sides

**Official Ballot
Special Election
Lincoln County, Washington
February 14, 2017**

Precinct *sample*

**ALMIRA SCHOOL DISTRICT NO. 17
Proposition No. 1**

Replacement Maintenance and Operation Levy

"A three year replacement maintenance and operation levy: The Board of Directors of Almira School District No. 17 adopted Resolution No. 235, concerning a proposition to finance maintenance and operation expenses. This proposition would authorize the district to levy the following excess taxes, in place of an expiring levy, upon all taxable property within the district, for support of the district's General Fund educational maintenance and operation expenses:

Levy Collection Year	Approximate Levy Rate /\$1000	Levy Amount
2018	\$2.64	\$205,000
2019	\$2.68	\$210,000
2020	\$2.72	\$215,000

all as provided in Resolution No. 235. Should this proposition be approved?"

- LEVY YES
- LEVY NO

**WILBUR SCHOOL DISTRICT NO. 200
Proposition No. 1**

Capital Projects Levy

"The Board of Directors of Wilbur School District No. 200, Lincoln County, Washington, adopted Resolution No. 01-17, concerning a proposition to finance improvement and maintenance of current school facilities expenses. This proposition would authorize the district to levy the following excess taxes upon all taxable property within the District, for support of the District's Capital Projects Fund facilities improvement and maintenance expenses:

Collection Years	Approximate Levy Rate/\$1000 Assessed Value	Levy Amount
2018	\$1.29	\$231,500
2019	\$1.29	\$231,500
2020	\$1.29	\$231,500

As provided in Resolution No. 01-17. Should this proposition be approved?"

- LEVY YES
- LEVY NO

**ODESSA SCHOOL DISTRICT NO. 105-157-166J
Proposition No. 1**

Replacement Maintenance and Operation Levy

"Shall a replacement excess levy of \$698,000 be collected in the year 2018, requiring approximately \$2.95 per \$1,000 of assessed valuation for Maintenance and Operation of Odessa School District #105, Lincoln County, joint with #157, Adams County and #166J, Grant County?"

- LEVY YES
- LEVY NO

**RITZVILLE SCHOOL DISTRICT NO. 160-67
Proposition No. 1**

Bonds to Modernize, Improve and Construct School Facilities

The Board of Directors of Ritzville School District No. 160-67 adopted Resolution No. 2016-008, concerning a proposition to improve infrastructure, safety and educational opportunities. This proposition would authorize the District to: modernize Lind-Ritzville High School; upgrade Ritzville Grade School; make health, safety, security, energy efficiency and infrastructure improvements to other school facilities; make District-wide instructional technology upgrades; issue no more than \$11,000,000 of general obligation bonds maturing within 15 years; and levy annual excess property taxes to repay the bonds, all as provided in Resolution No. 2016-008. Should this proposition be:

- Approved
- Rejected

**ODESSA SCHOOL DISTRICT NO. 105-157-166J
Proposition No. 2**

Replacement Capital Levy For School Improvements

"Shall a replacement excess levy of \$110,000 be collected in year 2018, requiring approximately \$0.46 per \$1,000 of assessed valuation for the modernization of school facilities by making health, safety and energy efficiency improvements to school facilities of Odessa School District #105, Lincoln County, joint with #157, Adams County and #166J, Grant County?"

- LEVY YES
- LEVY NO

Sample Ballot 12000360200074

600000007246

Sample Ballot

4673031261

Vote Both Sides

Official Ballot
Special Election
Lincoln County, Washington
February 14, 2017

Precinct *sample*

Hospital District

**HOSPITAL DISTRICT NO. 1
Proposition No. 1**

Replacement of Expiring One-Year Operation and Maintenance Levy

The Commission of Public Hospital District No. 1, Lincoln County, adopted Resolution No. 111016.03 concerning a proposition to finance operation and maintenance expenses. This proposition would authorize the District to maintain current levels of essential health care services by levying excess property taxes, in place of an expiring levy, at the estimated levy rate of \$2.73 per \$1,000 of assessed value upon all taxable property within the District for collection in 2018 to provide a total of \$636,000 for paying part of the District's operation and maintenance expenses, all as provided in Resolution No. 111016.03. Should this proposition be approved?

LEVY YES

LEVY NO

Cemetery District

**CEMETERY DISTRICT NO. 7
Proposition No. 1**

Regular Property Tax Levy for Cemetery Maintenance and Operation

"The Board of Commissioners of Lincoln County Cemetery District No. 7 adopted Resolution 2016-03 concerning a proposition for cemetery maintenance and operation. This proposition would authorize the District to levy the following excess tax upon all taxable property within the District for support of the District's cemetery maintenance and operation expenses.

Collection Year	Approximate Levy Rate Per \$1,000 Assessed Value	Levy Amount
2018	\$.30	\$30,000

All as provided in Resolution 2016-03. Should this proposition be approved?"

LEVY YES

LEVY NO

Sample Ballot 22000360300066

600000007149

Sample Ballot

4673031261



Sample Ballot22000360400073

600000007343



This page intentionally left blank



4673031261

Sample Ballot