

OFFICIAL BALLOT
Lincoln County, Washington
Special Election
February 09, 2016

Precinct *Sample*

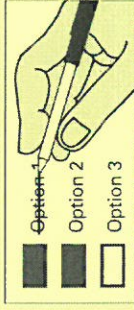
Instructions

How to vote



Use a dark blue or black ink pen to completely fill in the box to the left of your choice.
Vote for one in each race. If you vote for more than one, no votes will be counted for that race.

If you make a mistake



Draw a line through the entire measure response or candidate's name.
Then you may make another choice.



Who donates to campaigns?

View contributors for candidates and measures

Public Disclosure Commission

www.pdc.wa.gov
Toll Free (877) 601-2828

After voting, secure your voted ballot in the white security envelope and place in the green mailing envelope. Sign and date the Affidavit on back. If your ballot is damaged to the point it is not useable, you may get a replacement by contacting the Election Office at: (509) 725-4971 or (800) 725-3031. Please affix first class postage, (\$0.49) or if you choose not to mail your ballot you may deliver it to: Lincoln County Auditor's Office, Lincoln County Courthouse, 450 Logan, Davenport or one of the designated drop boxes by 8:00 p.m. on Election Day. To find out more about drop box locations or the Accessible Voting Unit, visit our website: www.co.lincoln.wa.us

School District

**REARDAN-EDWALL SCHOOL DISTRICT NO. 9
Proposition 1**

Bonds To Renovate School Facilities

The Board of Directors of Reardan-Edwall School District No. 9 adopted Resolution No. 02-2015/16 concerning a proposition to improve student safety, infrastructure and educational opportunities. This proposition would authorize the District to: renovate Reardan Elementary School (including constructing classrooms, new roof, computer and science rooms and kitchen/multipurpose addition); and upgrading electrical and HVAC systems), renovate Smith Gym, and reconfigure bus loading zones; issue no more than \$10,895,000 of general obligation bonds maturing within 25 years; and levy annual excess property taxes to repay the bonds, all as provided in Resolution No. 02-2015/16. Should this proposition be:

- APPROVED
- REJECTED

**CRESTON SCHOOL DISTRICT NO. 73
Proposition 1**

Replacement Maintenance and Operation Levy - \$540,187.00

"A two year levy: Shall an excess levy of \$540,187.00 be collected in each of two years, 2017 and 2018, requiring approximately \$2,352 per \$1000.00 of assessed valuation, for Maintenance and Operation of Creston School District No. 073, Lincoln County, Washington?"

- LEVY ... YES
- LEVY ... NO

**ODESSA SCHOOL DISTRICT NO. 105
Proposition 1**

Replacement Maintenance and Operation Levy - \$698,000

"Shall a replacement excess levy of \$698,000 be collected in the year 2017, requiring approximately \$3.12 per \$1,000 of assessed valuation for Maintenance and Operation of Odessa School District No. 105, Lincoln County, joint with No. 157, Adams County and No. 166J, Grant County?"

- LEVY ... YES
- LEVY ... NO



Sample Ballot1200056010002

00000002132





OFFICIAL BALLOT
Lincoln County, Washington
Special Election

February 09, 2016

Precinct *Sample*

RITZVILLE SCHOOL DISTRICT NO. 160-67

Proposition 1

Replacement Maintenance and Operation Levy - \$1,038,215

The Board of Directors of Ritzville School District No. 160-67 adopted Resolution No. 2015-003, concerning a proposition to finance maintenance and operation expenses. This proposition would authorize the District to levy the following excess taxes, in place of an expiring levy, upon all taxable property within the District, for support of the District's General Fund educational maintenance and operation expenses:

Levy	Approximate Levy Rate/\$1000	Assessed Value	Levy Amount
Collection Year			
2017	\$3.00		\$1,038,215
2018	\$3.00		\$1,038,215

All as provided in Resolution No. 2015-003. Should this proposition be approved?

LEVY...YES

LEVY...NO

RITZVILLE SCHOOL DISTRICT NO. 160-67

Proposition 2

Bonds to Modernize, Improve and Construct School Facilities

The Board of Directors of Ritzville School District No. 160-67 adopted Resolution No. 2015-005, concerning a proposition to improve infrastructure, safety and educational opportunities. This proposition would authorize the District to: modernize Lind-Ritzville High School, upgrade Ritzville Grade School, make health, safety, security, energy efficiency and infrastructure improvements to other school facilities, make District-wide instructional technology upgrades, and construct a second gym for school and community use; issue no more than \$12,800,000 of general obligation bonds maturing within 20 years; and levy annual excess property taxes to repay the bonds, all as provided in Resolution No. 2015-005. Should this proposition be:

APPROVED

REJECTED

WILSON CREEK SCHOOL DISTRICT NO. 167

Proposition 1

Replacement Maintenance and Operation Levy

The Board of Directors of Wilson Creek School District #167-202 adopted Resolution #15-12, concerning a proposition to finance maintenance and operation expenses. This proposition would authorize the District to levy the following taxes, in place of an expiring levy, upon all taxable property within the District, for support of the District's General Fund educational maintenance and operation expenses:

Collection Year	Assessed Value	Levy Amount
2017	\$3.86	\$260,000.00
2018	\$3.91	\$263,500.00

All as provided in the Resolution No. 15-12. Should this proposition be approved?

LEVY...YES

LEVY...NO

Hospital District

HOSPITAL DISTRICT NO. 1

Proposition 1

Replacement of Expiring One-Year Operation and Maintenance Levy

The Commission of Public Hospital District No. 1, Lincoln County, adopted Resolution No. 111215.03 concerning a proposition to finance operation and maintenance expenses. This proposition would authorize the District to maintain current levels of essential health care services by levying excess property taxes, in place of an expiring levy, at the estimated levy rate of \$2.77 per \$1,000 of assessed value upon all taxable property within the District for collection in 2017 to provide a total of \$630,000 for paying part of the District's operation and maintenance expenses, all as provided in Resolution No. 111215.03. Should this proposition be approved?

LEVY...YES

LEVY...NO

