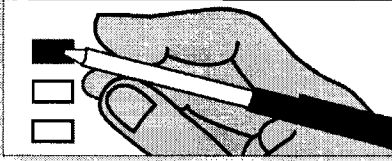


OFFICIAL BALLOT  
 Lincoln County, Washington  
 Special Election  
 February 11, 2014

Precinct **SAMPLE**

**Instructions**

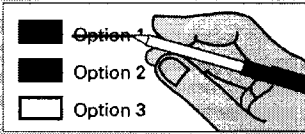
**How to vote**



Use a dark blue or black ink pen to completely fill in the box to the left of your choice.

Vote for one in each race. If you vote for more than one, no votes will be counted for that race.

**If you make a mistake**



Draw a line through the entire measure response or candidate's name. Then you may make another choice.

Please use a black or blue ink pen to mark your choices on the ballot. To vote for your choice in each contest, completely fill in the box provided to the left of your choice. Secure your voted ballot in the white Security Envelope and place in the green Mailing Envelope. Sign and date the Affidavit on back. If your ballot is damaged to the point it is not useable, you may get a replacement by contacting the Election Office at: (509) 725-4971 or (800) 725-3031. Please affix first class postage, (\$0.49) or if you choose not to mail your ballot you may deliver it to: Lincoln County Auditor's Office, Lincoln County Courthouse, 450 Logan, Davenport or one of the designated drop boxes before 8:00 p.m. on Election Day. Visit our web: [www.co.lincoln.wa.us](http://www.co.lincoln.wa.us)

"For a list of the people and organizations that donated to state and local candidates and ballot measure campaigns, visit [www.pdc.gov](http://www.pdc.gov)."

**SCHOOL DISTRICT**

**REARDAN-EDWALL SCHOOL DISTRICT NO. 9**  
**Proposition No. 1**

Bonds to Renovate School Facilities

The Board of Directors of Reardan-Edwall School District No. 9 adopted Resolution No. 03-2013/14 concerning a proposition to renovate school facilities. This proposition would authorize the District to renovate the Reardan Elementary School (including constructing classrooms, computer and science rooms, kitchen/multipurpose addition and new roof; and upgrading electrical and HVAC systems), renovate Smith Gym (including upgrading plumbing, electrical and HVAC systems and making ADA improvements), and reconfigure bus loading zones; issue no more than \$8,405,000 of general obligation bonds maturing within 30 years; and levy annual excess property taxes to repay the bonds, as provided in Resolution No. 03-2013/14. Should this proposition be:

- APPROVED
- REJECTED

**ALMIRA SCHOOL DISTRICT NO. 17**  
**Proposition No. 1**

Replacement Maintenance and Operation Levy

A three year replacement maintenance and operation levy: The Board of Directors of Almira School District No. 17 adopted Resolution No. 225, concerning a proposition to finance maintenance and operation expenses. This proposition would authorize the district to levy the following excess taxes, in place of an expiring levy, upon all taxable property within the district, for support of the district's General Fund education maintenance and operation expenses:

Levy Collection Year	Approximate Levy Rate/\$1000 Assessed Value	Levy Amount
2015	\$2.62	\$200,000
2016	\$2.64	\$205,000
2017	\$2.68	\$210,000

all as provided in Resolution No. 225. Should this be approved?

- LEVY YES
- LEVY NO

**CRESTON SCHOOL DISTRICT NO. 073**  
**Proposition No. 1**

Replacement Maintenance and Operation Levy - \$422,000.00

"A two year levy: Shall an excess levy of \$422,000.00 be collected in each of two years, 2015 and 2016, requiring approximately \$1.94 per \$1,000.00 of assessed valuation, for Maintenance and Operation of Creston School District No. 073, Lincoln County, Washington?"

- LEVY YES
- LEVY NO

12000010100011

Sample Ballot

200000003192

Sample Ballot

3733031227

**OFFICIAL BALLOT**  
**Lincoln County, Washington**  
**Special Election**  
**February 11, 2014**

Precinct **SAMPLE**

**ODESSA SCHOOL**  
**DISTRICT NO. 105-157-166J**  
**Proposition No. 1**

Replacement Maintenance and Operation Levy - \$698,000

"Shall an excess levy of \$698,000 be collected in the year 2015, requiring approximately \$3.60 per \$1,000 of assessed valuation for Maintenance and Operation of Odessa School District No. 105, Lincoln County, joint with No. 157, Adams County and No. 166J, Grant County?"

LEVY YES  
 LEVY NO

**ODESSA SCHOOL**  
**DISTRICT NO. 105-157-166J**  
**Proposition No. 2**

Replacement Capital Levy For School Improvements - \$110,000

"Shall an excess levy of \$110,000 be collected in the year 2015, requiring approximately \$0.57 per \$1,000 of assessed valuation for the modernization of school facilities by making health, safety and energy efficiency improvements to school facilities of Odessa School District No. 105, Lincoln County, joint with No. 157, Adams County and No. 166J, Grant County?"

LEVY YES  
 LEVY NO

**WILBUR SCHOOL**  
**DISTRICT NO. 200**  
**Proposition No. 1**

Replacement Maintenance and Operation Levy - \$682,000

"The Board of Directors of Wilbur School District No. 200, Lincoln County, Washington, adopted Resolution No. 03-13, concerning a proposition to finance maintenance and operation expenses. This proposition would authorize the district to levy the following excess taxes upon all taxable property within the District, for support of the District's General Fund educational maintenance and operation expenses:

Levy Collection Year	Approximate Levy Rate/\$1000 Assessed Value	Levy Amount
2015	\$3.9937	\$682,000
2016	\$3.9937	\$682,000

As provided in Resolution No. 03-13. Should this proposition be approved?"

LEVY YES  
 LEVY NO

**WILBUR SCHOOL**  
**DISTRICT NO. 200**  
**Proposition No. 2**

Three Year Capital Projects Levy

"The Board of Directors of Wilbur School District No. 200, Lincoln County, Washington adopted Resolution No. 04-13, concerning a proposition to finance improvement and maintenance of current school facilities expenses. This proposition would authorize the district to levy the following excess taxes upon all taxable property within the District, for support of the District's Capital Projects Fund facilities improvement and maintenance expenses:

Collection Years	Approximate Levy Rate/\$1000 Assessed Value	Levy Amount
2015	\$1.2912	\$220,500
2016	\$1.2912	\$220,500
2017	\$1.2912	\$220,500

As provided in Resolution No. 04-13. Should this proposition be approved?"

LEVY YES  
 LEVY NO

**HARRINGTON SCHOOL**  
**DISTRICT NO. 204**  
**Proposition No. 1**

Replacement Maintenance and Operation Levy - \$535,000

"A two- year levy: The Board of Directors of Harrington School District 204 adopted Resolution No. 04-13, concerning a proposition to finance maintenance and operation expenses. This proposition would authorize the district to levy the following excess taxes, in place of an expiring levy, upon all taxable property within the district, for support of the district's General Fund educational maintenance and operation expenses:

Levy Collection Year	Approximate Levy Rate/\$1,000 Assessed Value	Levy Amount
2015	\$4.28	\$535,000
2016	\$4.28	\$535,000

all as provided in Resolution No. 04-13. Should this proposition be approved?"

LEVY YES  
 LEVY NO

12000010200018

Sample Ballot

200000003289

Sample Ballot

3733031227

**OFFICIAL BALLOT**  
**Lincoln County, Washington**  
**Special Election**  
**February 11, 2014**

**Precinct *SAMPLE***

**PUBLIC HOSPITAL DISTRICT**

**JOINT SCHOOL DISTRICT**

**PUBLIC HOSPITAL DISTRICT NO. 1**  
**Proposition No. 1**

**RITZVILLE SCHOOL**  
**DISTRICT NO. 160-67**  
**Proposition No. 1**

Replacement of Expiring One-Year Operation and Maintenance Levy

Replacement Maintenance and Operation Levy

The Commission of Public Hospital District No. 1, Lincoln County, adopted Resolution No. 111413.03 concerning a proposition to finance operation and maintenance expenses. This proposition would authorize the District to maintain current levels of essential health care services by levying excess property taxes, in place of an expiring levy, at the estimated levy rate of \$1.03 per \$1,000 of assessed value upon all taxable property within the District for collection in 2015 to provide a total of \$207,200 for paying part of the District's operation and maintenance expenses, all as provided in Resolution No. 111413.03. Should this proposition be approved?

The Board of Directors of Ritzville School District No. 160-67 adopted Resolution No. 2013-007, concerning a proposition to finance maintenance and operation expenses. This proposition would authorize the District to levy the following excess taxes, in place of an expiring levy, upon all taxable property within the District, for support of the District's General Fund educational maintenance and operation expenses:

Levy Collection Year	Approximate Levy Rate/\$1,000 Assessed Value	Levy Amount
2015	\$3.14	\$983,000
2016	\$3.14	\$983,000

LEVY YES  
 LEVY NO

all as provided in Resolution No. 2013-007. Should this proposition be approved?

LEVY YES  
 LEVY NO

**WILSON CREEK SCHOOL**  
**DISTRICT NO. 167-202-J**  
**Proposition No. 1**

Replacement Maintenance and Operation Levy

The Board of Directors of Wilson Creek School District No. 167-202-J adopted Resolution No. 13-14, concerning a proposition to finance maintenance and operation expenses. This proposition would authorize the District to levy the following taxes, in place of an expiring levy, upon all taxable property within the District, for support of the District's General fund educational maintenance and operation expenses:

Levy/ Collection Year	Approximate Rate Per \$1,000 Assessed Value	Levy Amount
2015	\$3.95	\$260,000.00
2016	\$3.90	\$260,000.00

All as provided in Resolution No. 13-14. Should this proposition be approved?

LEVY YES  
 LEVY NO

22000010300010

Sample Ballot

200000003192

Sample Ballot

3733031227



200000003386

**Sample Ballot**

22000010400017



This page intentionally left blank



3733031227

**Sample Ballot**