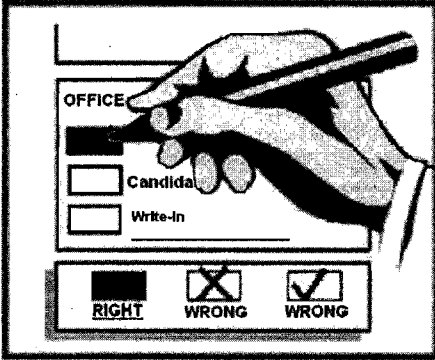


OFFICIAL BALLOT  
LINCOLN COUNTY, WASHINGTON  
Special Election  
March 10, 2009

Precinct **SAMPLE**



SPRAGUE SCHOOL DISTRICT NO. 8-163J

Sprague School District No. 8-163J

PROPOSITION NO. 1

REPLACEMENT TWO YEAR MAINTENANCE  
AND OPERATION LEVY - \$285,000

A two year levy: The Board of Directors of Sprague School District 8 adopted Resolution No. 1-2009, concerning a proposition to finance maintenance and operation expenses. This proposition would authorize the district to levy the following excess taxes, in place of an expiring levy, upon all taxable property within the district, for support of the district's General Fund educational maintenance and operation expenses:

Levy Collection Year	Approximate Levy Rate/\$1,000 Assessed Value	Levy Amount
2010	\$4.17	\$285,000
2011	\$4.17	\$285,000

all as provided in Resolution No. 1-2009. Should this proposition be approved?

- LEVY YES
- LEVY NO

CONTINUE ON OTHER SIDE

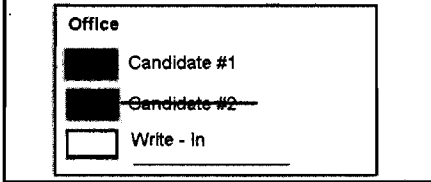


**Ballot Instructions:**

Please use a black or blue ink pen to mark your choices on the ballot. To vote for your choice in each contest, completely fill in the box provided to the left of your choice. To vote for a write-in candidate, completely fill in the box provided to the left of the words "Write-in" and write the name of the candidate on the line provided. If your ballot is damaged to the point it is not useable, you may get a replacement by contacting the Election Office at: (509) 725-4971 or (800) 725-3031. If you choose not to mail your ballot you may deliver it to: Lincoln County Auditor's Office, Lincoln County Courthouse, 450 Logan, Davenport or one of the designated drop boxes before 8:00 p.m. on Election Day.

**To Correct a Mistake:**

Draw a line through the entire candidate's name like shown below. You then have the option of making another choice.



Sample Ballot 12000320100080

700000002197

Sample Ballot

1843031138

OFFICIAL BALLOT  
LINCOLN COUNTY, WASHINGTON

Special Election

March 10, 2009

Precinct *SAMPLE*

REARDAN-EDWALL SCHOOL DISTRICT NO. 9

Reardan-Edwall School District No. 9

PROPOSITION NO. 1

CAPITAL PROJECTS LEVIES

The Board of Directors of Reardan-Edwall School District No. 9 adopted Resolution No. 4 08-09 concerning a proposition for capital levies. This proposition authorizes payment of debt service on the repair and renovation of existing facilities, the acquisition of real property and construction of facilities, and authorizes the following excess levies for such purposes on all taxable property with the District:

Collection Year	Approximate Levy	Levy Amount
	Rate/\$1,000 Assessed Value	
2010	\$1.32	\$488,000
2011	\$1.32	\$500,000
2012	\$1.32	\$512,000

all as provided in Resolution No. 4 08-09. Should this proposition be approved?

LEVY YES

LEVY NO

DAVENPORT SCHOOL DISTRICT NO. 207

Davenport School District No. 207

PROPOSITION NO. 1

BONDS FOR ELEMENTARY SCHOOL  
MODERNIZATION AND EXPANSION

The Board of Directors of Davenport School District No. 207 adopted Resolution No. 08-04, concerning a proposition to finance elementary school modernization and expansion. This proposition will authorize the District to modernize and expand the K-6 Elementary School Building, including upgrade HVAC, flooring, electrical and mechanical systems, and construct new additions for a middle school wing for Grades 7-8, library/media center for Grades K-8 and cafeteria/multipurpose room for Grades K-12; issue no more than \$7,320,000 of general obligation bonds maturing within 21 years; and levy annual excess property taxes to repay the bonds, all as provided in Resolution No. 08-04. Should this proposition be:

APPROVED

REJECTED

Sample Ballot 12000320200087

700000002294

Sample Ballot

1843031138