

**OFFICIAL BALLOT  
LINCOLN COUNTY WASHINGTON  
SPECIAL ELECTION**

March 11, 2008

Precinct *sample*

**Instructions:**

Your ballot should be voted in secret and shown to no one. Please use a black or blue ink pen to mark your choices on the ballot. To vote for your choice in each contest, completely fill in the box provided to the left of your choice.

If you incorrectly mark your ballot, you may correct it by placing an "X" through the incorrect choice and then mark the correct box to the left of your choice.

If your ballot is damaged to the point it is not useable you may get a replacement by contacting the Election Office at: (509) 725-4971 or (800) 725-3031.

Place your voted ballot in the white Security Envelope and seal the envelope.

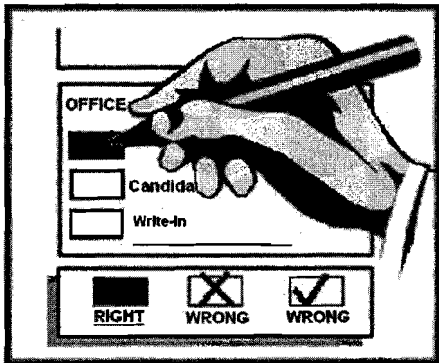
Do not write or make any mark of identification on the Security Envelope.

After your voted ballot has been sealed in the Security Envelope, put the Security Envelope inside the green Mailing Envelope.

Sign the Affidavit on the back of the Mailing Envelope. Your ballot will not be counted if it is not signed.

Affix sufficient first class postage to the Mailing Envelope and mail so that it will be POSTMARKED the day of the election or sooner.

If you choose not to mail your ballot you may deliver it to: Lincoln County Auditor's Office, Lincoln County Courthouse, 450 Logan, Davenport or one of the designated drop boxes before 8:00 p.m. on Election Day.



**COUNTY**

**REARDAN-EDWALL SCHOOL  
DISTRICT NO. 9**

**PROPOSITION NO. 1**

**SCHOOL MAINTENANCE AND OPERATION LEVY**

To meet the educational needs of students in Reardan-Edwall School District No. 9, shall the District be authorized to levy the following taxes, in excess of regular tax levies and in place of an expiring levy, upon all taxable property within the District, for support of the District's General Fund maintenance and operation expenses:

Collection Year	Approximate Levy Rate per \$1,000 Assessed Value	Levy Amount
2009	\$2.89	\$990,000
2010	\$2.89	\$1,019,000
2011	\$2.89	\$1,050,000

all as specified in District Resolution No. 03 07-08?

LEVY YES

LEVY NO

**CRESTON SCHOOL  
DISTRICT NO. 73**

**PROPOSITION NO. 1**

**TWO YEAR LEVY FOR  
MAINTENANCE AND OPERATION - \$262,000.00**

"A two year levy: Shall an excess levy of \$262,000.00 be collected in each of two years, 2009 and 2010, requiring approximately \$1.58 per \$1,000.00 of assessed valuation, for Maintenance and Operation of Creston School District No. 073, Lincoln County Washington?"

LEVY YES

LEVY NO

Sample Ballot 1200650100094  
10000002130

Sample Ballot

1293031147

Vote Both Sides

OFFICIAL BALLOT  
LINCOLN COUNTY WASHINGTON  
SPECIAL ELECTION  
March 11, 2008

Precinct *sample*

ODESSA SCHOOL  
DISTRICT NO. 105-157-166J

PROPOSITION NO. 1

SPECIAL LEVY FOR MAINTENANCE AND OPERATION

"Shall an excess levy of \$533,000 be collected in the year 2009, requiring approximately \$3.78 per \$1,000 of assessed valuation for Maintenance and Operation of Odessa School District #105, Lincoln County, joint with #157, Adams County and #166J, Grant County?"

- LEVY YES
- LEVY NO

WILBUR SCHOOL  
DISTRICT NO. 200

PROPOSITION NO. 1

REPLACEMENT OF EXPIRING MAINTENANCE  
AND OPERATION LEVY

"The Board of Directors of Wilbur School District No. 200 adopted Resolution No. 09-08, concerning a proposition to finance maintenance and operation expenses. This proposition would authorize the District to levy the following excess taxes, in place of an expiring levy, upon all taxable property within the District, for support of the District's General Fund educational maintenance and operation expenses:

Collection Year	Approximate Levy Rate/\$1,000 Assessed Value	Levy Amount
2009	\$3.44	\$415,000
2010	\$3.44	\$415,000

As provided in Resolution No. 09-08. Should this proposition be approved?"

- LEVY YES
- LEVY NO

HARRINGTON SCHOOL  
DISTRICT NO. 204

PROPOSITION NO. 1

REPLACEMENT MAINTENANCE AND OPERATION LEVY - \$422,000

A two year levy: The Board of Directors of Harrington School District 204 adopted Resolution No. 05-07, concerning a proposition to finance maintenance and operation expenses. This proposition would authorize the district to levy the following excess taxes, in place of an expiring levy, upon all taxable property within the district, for support of the district's General Fund educational maintenance and operation expenses:

Levy Collection Year	Approximate Levy Rate/\$1,000 Assessed Value	Levy Amount
2009	\$4.80	\$422,000
2010	\$4.80	\$422,000

all as provided in Resolution No. 05-07. Should this proposition be approved?

- LEVY YES
- LEVY NO

DAVENPORT SCHOOL  
DISTRICT NO. 207

PROPOSITION NO. 1

CAPITAL LEVY FOR IMPROVEMENTS TO  
SCHOOL FACILITIES AND TECHNOLOGY

The Board of Directors of Davenport School District No. 207 adopted Resolution No. 07-02, concerning a proposition to finance improvements to school facilities and technology. This proposition would authorize the District to make improvements to school facilities and acquire technology equipment to improve student learning, and levy the following excess taxes on all taxable property within the District:

Levy Collection Year	Approximate Levy Rate/\$1,000 Assessed Value	Levy Amount
2009	\$1.28	\$250,000

all as provided in Resolution No. 07-02. Should this proposition be approved?

- LEVY YES
- LEVY NO

Sample Ballot 12000650200004  
100000002227

Sample Ballot

1293031147

Vote Both Sides

OFFICIAL BALLOT  
LINCOLN COUNTY WASHINGTON  
SPECIAL ELECTION

March 11, 2008

Precinct *sample*

PUBLIC HOSPITAL  
DISTRICT NO. 1

PROPOSITION NO. 1

REPLACEMENT OF EXPIRING ONE-YEAR  
OPERATION AND MAINTENANCE LEVY

The Commission of Public Hospital District No. 1, Lincoln County, adopted Resolution No. 111407.03 concerning a proposition to finance operation and maintenance expenses. This proposition would authorize the District to maintain current levels of essential health care services by levying excess property taxes, in place of an expiring levy, at the estimated levy rate of \$1.03 per \$1,000 of assessed value upon all taxable property within the District for collection in 2009 to provide a total of \$151,000 for paying part of the District's operation and maintenance expenses, all as provided in Resolution No. 111407.03. Should this proposition be approved?

LEVY YES

LEVY NO

Sample Ballot22000650300093

10000002130

Sample Ballot

1293031147